

KOMATSU®

D155CX-8

Tier 4 Final Engine

K170 Pipelayer

K216 Pipelayer

PIPELAYER

D155CX



Photos may include optional equipment.

NET HORSEPOWER

354 HP @ 1900 rpm
264 kW @ 1900 rpm

OPERATING WEIGHT

K170	K216
120,970 lb	128,660 lb
54870 kg	58360 kg

LIFT CAPACITY

K170	K216
170,000 lb	216,000 lb
77110 kg	97976 kg

*Maximum lift at tipping point (ISO 8813 1992)

WALK AROUND



Outstanding Lift Capacity and Balance With a Conventional Undercarriage Design

Standard 24 ft 7.3m boom or optional 28 ft 8.5m boom with 170,000 lb 77,110 kg (K170) or 216,000 lb 97,976 kg (K216) lift capacity

Long and wide oval track undercarriage places the final drives and other heavy components lower to the ground for improved center of gravity and balance

Komatsu SAA6D140E-7 variable geometry turbocharged and after cooled 15.24 liter diesel engine is EPA Tier 4 Final emissions certified.

- Heavy duty Selective Catalytic Reduction (SCR) system
- Diesel Exhaust Fluid (DEF) system
- Komatsu Diesel Particulate Filter (KDPF) system
- Heavy duty cooled Exhaust Gas Recirculation (EGR) system
- Electronic control system - seamless to the operator
- Komatsu Variable Geometry Turbocharger (KVGT) system
- Heavy duty High Pressure Common Rail (HPCR) fuel injection system

Komatsu Diesel Particulate Filter (KDPF) and Selective Catalytic Reduction (SCR) systems reduce particulate matter and NOx while providing automatic regeneration that does not interfere with daily operation.

Komatsu Variable Geometry Turbocharger (KVGT) uses a hydraulic actuator to provide optimum air flow under all speed and load conditions.

Komatsu Auto Idle Shutdown helps reduce excessive idle time.



Front bumper with integrated towing pin.

High flow rear hydraulics for winch (standard).

Rear view monitoring system (standard).

Front view monitoring system (standard).

Right view monitoring system (standard).

Advanced diagnostic system continuously monitors machines operation and vital systems to identify machine issues, assists with troubleshooting, and minimizes down time.

Integrated ROPS cab features:

- Large, quiet, and pressurized cab
- Excellent visibility with integrated ROPS structure
- High capacity heated air suspension seat
- Roof mounted A/C condenser
- Auto climate control provides heating and cooling for year round operator comfort
- Skylight for viewing the boom
- Emergency exit
- Load Moment Indicator (LMI) with boom angle indicator and anti-2-block alarm is standard

Hydrostatic Steering System (HSS) with 14% higher capacity steering motor provides smooth, quick, and improved steering control in various ground conditions. (Counter-rotation is available when in neutral.)

Complete operator control

- Palm Command Control System (PCCS)
- Boom/hook/counterweight functions on one joystick lever
- 3-speed manual shift transmission
- Forward/reverse shift pattern preset function
- Electro-hydraulic controlled winches
- Winch drums easily viewed for spooling cable
- Power and Economy modes
- Quick drop control to release the load quickly

Cold weather operation

- Large capacity batteries
- Engine air intake heater grid
- Provision for engine oil and coolant heaters, 120V
- Radiator cooling fan with full time reverse mode



Large color monitor:

- Easy-to-read large 7" high-resolution multi-color monitor
- Easy-to-use multiple choice pull-down menus
- Easy-to-use onboard diagnostics without requiring a laptop
- Ecology guidance
- Secondary 7" display for front and side cameras

LED (Light Emitting Diode) work lights:

- 10 lamps
- Illuminate large area to front, side, rear

Serviceability:

- Machine access from 4 corners of machine
- Battery disconnect switch with lockout
- Tie-offs for technician restraint harness



Komtrax remote monitoring with Iridium GPS satellite system is standard and there is no fee. Send information to a secure website including machine location, SMR, error codes, cautions, maintenance items, fuel usage, fuel levels, DEF levels, ambient conditions, and much more.

STABILITY AND BALANCE



Oval track with a low center of gravity provides excellent stability and a smooth ride. Long track-on-ground offers low ground pressure and leaves shallow tracks in the ground when turning.



Front bumper with 2.5"(63mm) diameter pin meets ISO# 10532 and is easy to attach a cable with terminator.



Right side mounted winches add to lifting ability and provide unimpeded visibility to work equipment on the left side



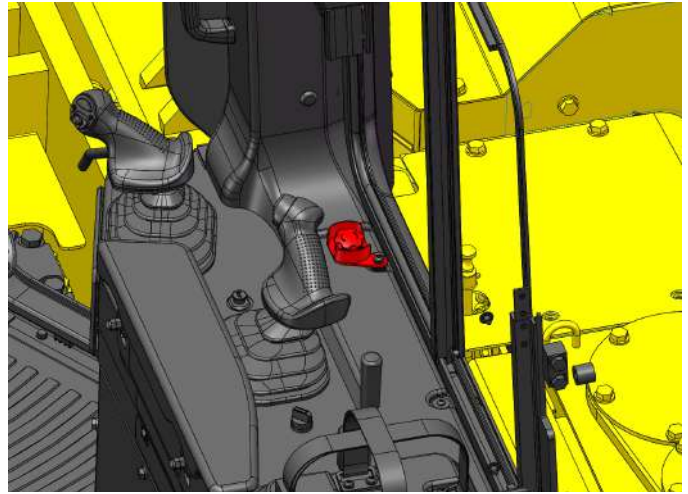
Pull-Master winches are built to Komatsu specifications to provide precise, smooth hook and boom movement

D155CX-8

OPERATOR COMFORT REDUCES FATIGUE



Comfortable air-conditioned and heated ROPS cab has large glass area for good visibility



Boom/hook/counterweight control centralized on one lever



Engine decelerator and brakes can be applied independently



Air-suspension seat with heat is standard

VISIBILITY

D155CX-8



Good view to the boom through the skylight in the cab roof



Good view to winch drums for spooling



ROPS structure integrated into cab eliminates side posts



Three cameras provide additional views around the machine. Forward view camera (above), with selectable right-side camera and rearview camera are standard. Load Moment Indicator information is displayed at top of screen.

SERVICEABILITY



Steps and handrails on 4-corners of machine provide access for servicing the engine and other components



Steps, platform and handrails provide easy access to the fuel tank



Komatsu Care complimentary factory scheduled maintenance for the first 3 years or 2000 hours, whichever occurs first. Includes two Diesel Particulate Filter exchanges and Selective Catalytic Reduction maintenance in the first 5 years or 9000 hours.



Komtrax remote monitoring telematics with Iridium GPS satellite system is standard with no subscription fee for the life of the machine

SPECIFICATIONS



ENGINE

Model..... Komatsu SAA6D140E-7**
 Type..... 4-cycle, water-cooled, direct injection
 Aspiration..... Komatsu Variable Geometry Turbocharged, air-to-air aftercooled, cooled EGR
 Number of cylinders..... 6
 Bore x stroke..... 140 mm x 165 mm **5.51" x 6.50"**
 Piston displacement..... 15.24 ltr **930 in³**
 Governor..... Mid-range, electronic
 Horsepower
 SAE J1995..... Gross 268 kW **360 HP**
 ISO 9249 / SAE J1349*..... Net 264 kW **354 HP**
 Rated rpm..... 1900 rpm
 Fan drive type Hydraulic
 Lubrication system
 Method..... Gear pump, force lubrication
 Filter..... Full-flow

*Net horsepower at the maximum speed of radiator cooling fan 239 kW **320 HP**

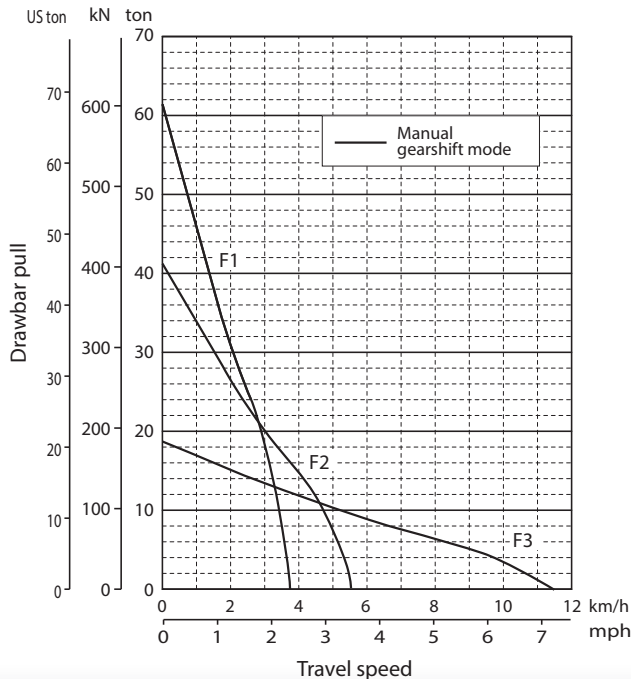
**EPA Tier 4 Final emissions certified



TORQFLOW TRANSMISSION

Komatsu's 3-speed TORQFLOW transmission consists of a water-cooled, 3-element, 1-stage, 1-phase, torque converter, and a planetary gear, multiple-disc clutch transmission which is hydraulically actuated and force-lubricated for optimum heat dissipation. Equipped with gearshift lock lever and neutral safety switch.

Travel speed	Forward	Reverse
1st	3.8 km/h 2.4 mph	4.6 km/h 2.9 mph
2nd	5.6 km/h 3.5 mph	6.8 km/h 4.2 mph
3rd	11.6 km/h 7.2 mph	14.0 km/h 8.7 mph



FINAL DRIVES

Double-reduction, spur and planetary final drives increase tractive effort. Segmented sprockets are bolt-on for easy in-the-field replacement.



STEERING SYSTEM

PCCS lever controls for all directional movements. Pushing the PCCS lever forward results in forward machine travel, while pulling it rearward reverses the machine. Simply tilt the PCCS lever to the left to make a left turn. Tilt it to the right for a right turn.

Hydrostatic steering system (HSS) is powered by steering planetary units and an independent hydraulic pump and motor. Counter-rotation turns are also available. Wet, multiple-disc, pedal-controlled service brakes are spring-actuated and hydraulically released. Gearshift lock lever also applies parking brakes.



UNDERCARRIAGE

Pipelay model	K170	K216
Suspension	Fixed roller, non-oscillating track frame	
Track roller frame	Monocoque, high-tensile-strength steel construction	
Track type	Sealed and lubricated	
Track shoe	Moderate service with clipped grouser	
Shoe width	810 mm 32 in	860 mm 34 in
Shoes per side	48	48
Track gauge	2400 mm 94.5 in	2550 mm 100.4 in
Length of track on ground	3925 mm 154 in	3925 mm 154 in
Ground contact area ISO 16754	7.1 m ² 10,990 in²	7.5 m ² 11,670 in²
Ground pressure ISO 16754 (1)	0.77 kgf/cm ² 11.0 psi	0.77 kgf/cm ² 11.0 psi
Track rollers per side	9	9
Carrier rollers per side	2	2
Grouser height	80 mm 3.1 in	80 mm 3.1 in
Link pitch	228 mm 9.0 in	228 mm 9.0 in

(1) Ground pressure with 7.3 m **24 ft** long boom and drawbar



HYDRAULIC SYSTEM

Closed-center load sensing system (CLSS) designed for precise and responsive control, and for efficient simultaneous operation.

Hydraulic control unit:
 All spool control valves externally mounted beside the hydraulic tank.

Variable piston pump with capacity (discharge flow) of 325 L/min 85.9 U.S. gal for steering and 320 L/min 84.6 U.S. gal for implement at rated engine rpm.

Relief valve setting

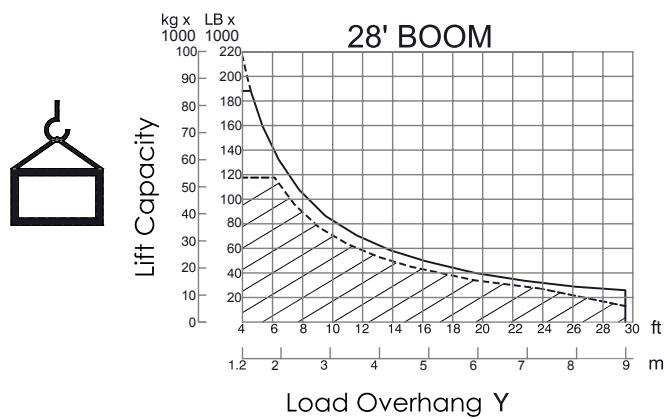
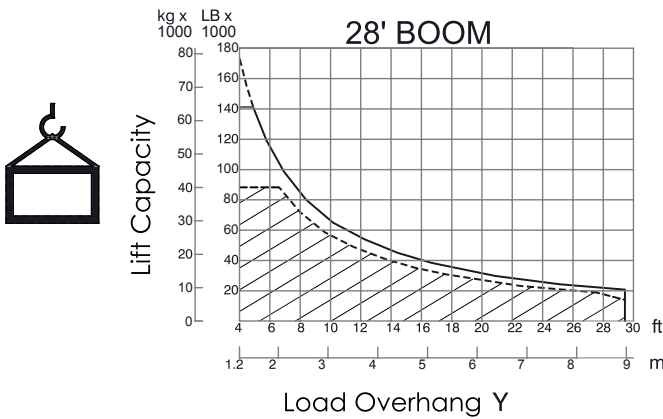
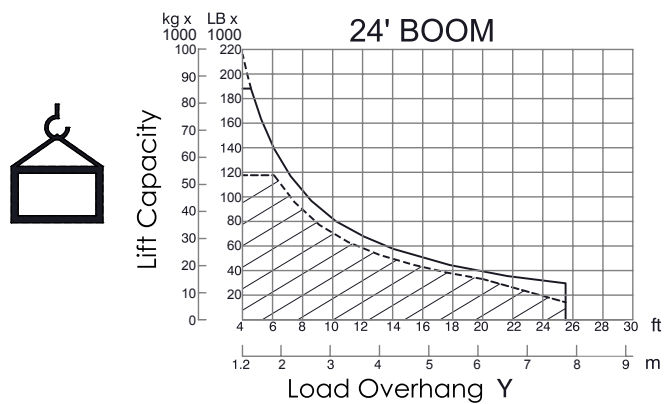
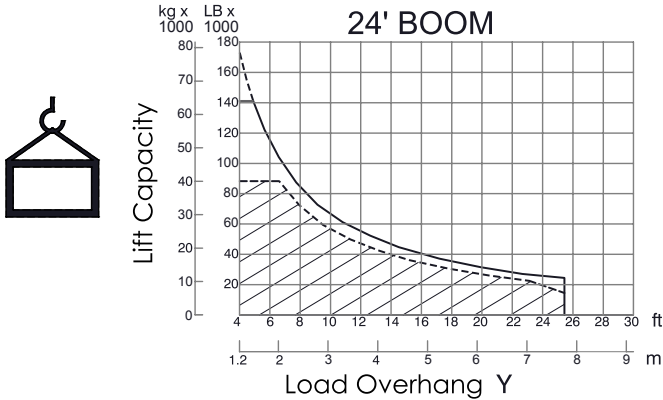
- for implement 27.5 MPa 280 kg/cm² 3,980 psi
- for steering 38.2 MPa 390 kg/cm² 5,550 psi



LIFTING CAPACITY (ANSI/ASME B30.14, ISO 8813)

K170

K216



	Lift Capacity (ISO 8813:1992)	K170 24' Boom / 28' Boom	K216 24' Boom / 28' Boom
A	Lift capacity maximum at tipping point @ 4' overhang	77111 kg 170,000 lb	97976 kg 216,000 lb
B	Rated load maximum @ 4' overhang (85% of tipping)	65544 kg 144,500 lb	83280 kg 183,600 lb
C	Working load maximum @ 4' overhang (25% of rope strength)	40000 kg 88,200 lb	53340 kg 117,600 lb

SPECIFICATIONS



COMPONENT WEIGHTS (APPROXIMATE)

Pipelayer model	K170	K216
Counterweight total weight	6070 kg 13,380 lb	9148 kg 20,169 lb
Counterweight section quantity	11	17
Weight per section	11 @ 552 kg 1,217 lb	15 @ 516 kg 1,137 lb 2 @ 700 kg 1,557 lb
Boom 7.3 m 24' standard	1715 kg 3,781 lb	
Boom 8.5 m 28' optional	1927 kg 4,249 lb	
Counterweight frame	1881 kg 4,146 lb	1363 kg 3,005 lb
Counterweight yoke	636 kg 1,400 lb	880 kg 1,940 lb
Boom block and load block	706 kg 1,556 lb	833 kg 1,837 lb



PIPELAYING EQUIPMENT

Pipelayer model	K170	K216
Boom length standard	7300 mm 24'	
Boom length optional	8569 mm 28'	
Boom parting lines	5	
Hook line partings	6	8
Hook low speed raise	8.5 - 13.0 m/min 28 - 42.8 ft/min	7.3 - 10.5 m/min 23.8 - 34.6 ft/min
Hook high speed raise	19.3 - 23.3 m/min 63.3 - 76.6 ft/min	17.0 - 20.6 m/min 55.7 - 67.5 ft/min
Hook free fall	Yes	
Boom winch drum diameter	254 mm 10"	
Boom winch drum width	279 mm 11"	
Boom winch drum cable capacity	75.3 m 247'	
Boom winch drum rope diameter	19 mm 0.75"	
Hook winch drum diameter	254 mm 10"	
Hook winch drum width	432 mm 17"	
Hook winch drum cable capacity	152 m 499'	
Hook winch drum rope diameter	19 mm 0.75"	



SHIPPING

Pipelayer configuration	K170		K216	
	Width	Weight	Width	Weight
Fully assembled, boom vertical, 10% fuel**	4115 mm 13'6"	54590 kg 120,353 lbs	4356 mm 14'4"	58005 kg 127,879 lbs
Boom removed	4115 mm 13'6"	52660 kg 116,100 lbs	4356 mm 14'4"	56080 kg 123,630 lbs
Boom and C/W sections removed	3810 mm 12'6"	46590 kg 102,720 lbs	4074 mm 13'4"	46930 kg 103,460 lbs
Boom and C/W sections and C/W frame and C/W yoke removed	3657 mm 12'	44090 kg 97,190 lbs	3855 mm 12'8"	44680 kg 98,510 lbs

** K170: 28' boom, long drawbar, 32" track shoes, 10% fuel

** K216: 28' boom, long drawbar, 34" track shoes, 10% fuel

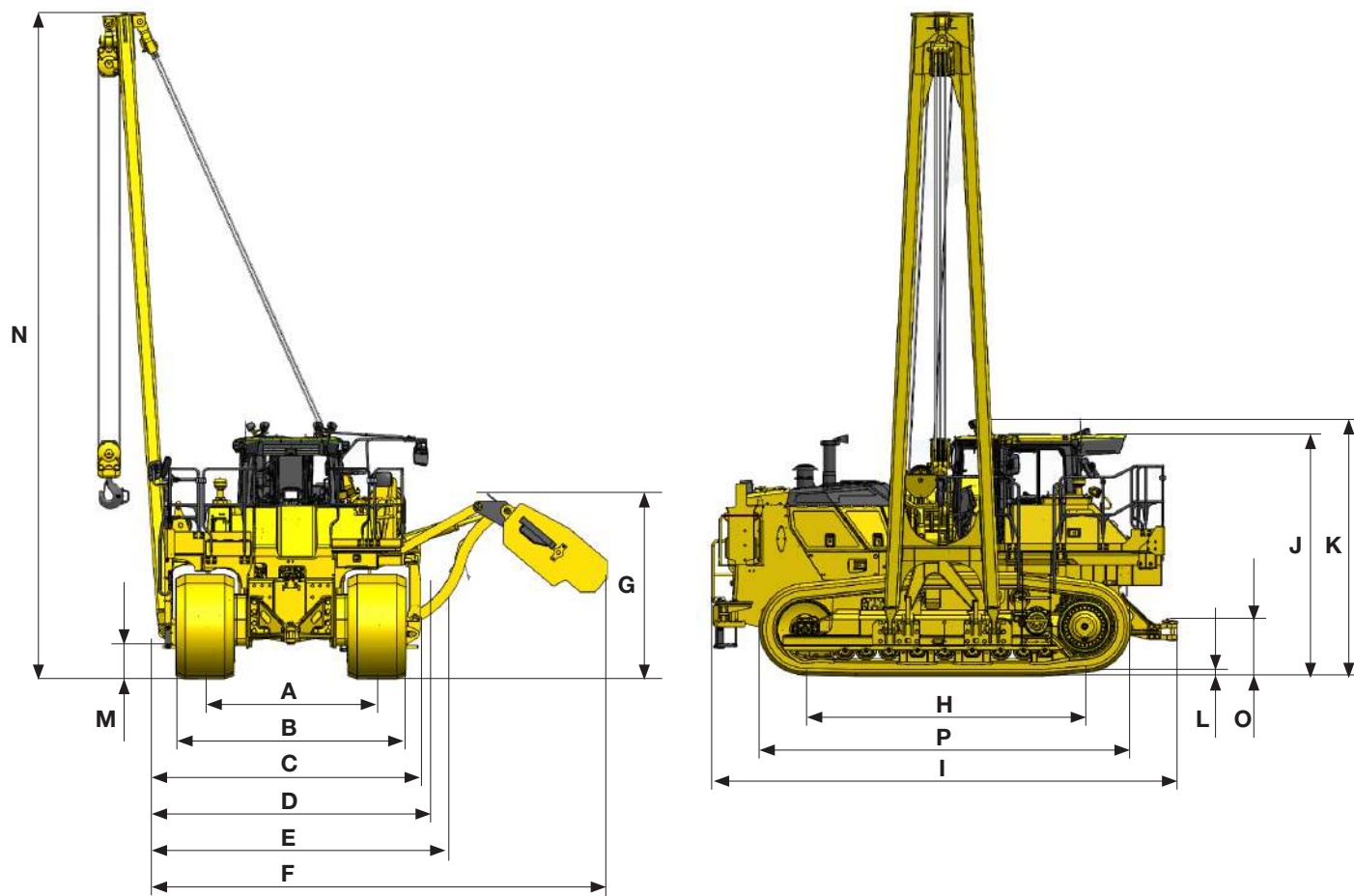


SERVICE REFILL CAPACITIES

Fuel tank	625 ltr	165 U.S. gal
Coolant	104 ltr	27.5 U.S. gal
Engine oil	37 ltr	9.8 U.S. gal
Damper	1.5 ltr	0.4 U.S. gal
Transmission, bevel gear, steering system	90 ltr	23.8 U.S. gal
Final drive (each side).....	31 ltr	8.2 U.S. gal
DEF tank	39 ltr	10.3 U.S. gal
Hydraulic oil capacity (tank only).....	95 ltr	25.1 U.S. gal
Hydraulic oil capacity (system).....	133 ltr	35 U.S. gal
Boom Winch Case (gearbox).....	23.8 ltr	6.3 U.S. gal
Hook Winch Case (gearbox)	15.5 ltr	4.1 U.S. gal



Bracket to store blocks during shipping is standard



DIMENSIONS

Pipelayer model		K170		K216	
A	Track gauge	2400 mm	7' 10"	2550 mm	8' 4"
B	Width of tractor (32" shoes)	3210 mm	10' 6"	3410 mm	11' 2"
C	Width of tractor (counterweight/boom/counterweight frame removed)	3653 mm	12'	3854 mm	12' 8"
D	Width of tractor (counterweight/boom removed)	3796 mm	12' 5"	4073 mm	13' 4"
E	Width of tractor (counterweight retracted)	4079 mm	13' 4"	4356 mm	14' 3"
F	Width of tractor (counterweight extended)	6255 mm	20' 6"	6532 mm	21' 5"
G	Machine height (top of counterweight)	2604 mm	8' 6"		
H	Length of track on ground	3925 mm	12' 10"		
I	Operating length	6516 mm	21' 4"		
J	Height of machine (ROPS cab)	3400 mm	11' 2"		
K	Height of machine (ROPS cab lights in working position)	3604 mm	11' 10"		
	Height of machine (ROPS cab lights rotated down for shipping)	3505 mm	11' 6"		
L	Grouser height	80 mm	3.1"		
M	Ground clearance	572 mm	1' 10"		
N	Boom height (at SAE 1.22 M [4 ft] overhang) 7.31 M (24 ft) boom	8096 mm	26' 6"		
	Boom height (at SAE 1.22 M [4 ft] overhang) 8.53 M (28 ft) boom	9310 mm	30' 6"		
O	Drawbar height	782 mm	2' 6"		
P	Track overall length	5213 mm	17' 1"		



STANDARD EQUIPMENT FOR BASE D155CX-8 MACHINE*

- Air cleaner, double element with dust indicator
- Alternator, 140 ampere/24V
- Backup alarm
- Batteries, 200 Ah/2 x 12V
- Battery disconnect switch with lockout
- Boom and C'wt limit switches
- Bumper, front with pull device
- Color monitor, LCD
- Decelerator pedal
- Draw works with 7.3m 24' boom, hook, blocks, cables, extendable counterweight
- Ecology drains
 - Engine oil
 - Coolant
 - Hydraulic oil
 - Fuel tank
- Engine hood
- Engine idle auto shutdown with adjustable timer
- Engine intake centrifugal precleaner
- Engine, gull-wing side covers
- Engine shutdown secondary switch
- Exhaust pipe with raincap
- Extended length fixed roller track frame, wide track gauge
- Fast fuel provision
- Fenders
- Front pull hook
- Fuel pre-filter and primary filter
- Fuel priming pump, electric
- Grid heater starting aid in cold weather
- Hard bar, integral non-oscillating
- High mount foot rests
- Horn, warning
- Hydraulic driven radiator cooling fan with manual reverse clean mode and cold weather reverse operating mode
- Hydraulics for draw works and counterweight
- Hydraulics for towing winch (high flow)
- KOMTRAX® Level 5, Iridium satellite
- Komatsu Diesel Particulate Filter (KDPF)
- Variable Geometry Turbocharger (VGT)
- Komatsu Selective Catalytic Reduction (SCR)
- Load Moment Indicator with boom angle indicator and Anti-2-block alarm
- Locks, filler caps and covers
- Oil pressure check ports and covers
- Oil pressure check ports for power train
- PM service connector
- Provision for Load Moment Indicator
- Radiator mask, double door, heavy-duty, hinged perforated
- Radiator reserve tank
- Rear cover
- Restraint harness tie-off points
- ROPS cab
 - Air conditioner/heater/defroster
 - Autoclimate control
 - Pressurized with air precleaner
 - Condenser remote mounted
 - Skylight in roof
 - Emergency exit
- Cab accessories
 - 12V power supply (2 ports)
 - Cup holder
 - Rearview mirror
 - Rear view monitoring (1 camera)
 - Forward view monitoring (1 camera)
 - Right view monitoring (1 camera)
 - AM/FM Radio w/remote AUX plug (3.5 mm)
 - Lunch box holder
- Work lights, 10 LED type
 - 2 front, hood mounted
 - 2 front, cab mounted
 - 2 side, cab mounted
 - 2 rear, fender mounted
 - 2 rear, cab mounted
- Monitor with 7" color display
 - Diagnostics capability
 - Performance records
 - Service records
- Seat, air suspension, fabric, heated, low back, rotates 12.5° to right, headrest
- Seat belt, 76 mm 3", retractable
- Seat belt indicator
- Sealed electrical connectors
- Starting motor, 11.0 kW/24V
- Starting aid, air intake heater grid
- Steering system
 - Hydrostatic Steering System (HSS)
 - High capacity steering motor
- Storage bracket for blocks during transport
- Torque converter
- Track roller guards, end and center guiding sections
- Track shoe assembly
 - 228 mm 9" pitch sealed and lubricated
 - Master links
 - K170: 810 mm 32" clipped moderate service
 - K216: 860 mm 34" clipped moderate service
- Transmission, 3-speed manual powershift
- Underguards, heavy duty
 - Hinged belly pans
- Walkway with steps and handrails
- Water separator, fuel
- Wide core cooling package, 6 fins per inch spacing

*Rear mounted equipment is not included in base machine standard equipment

**Cab meets:
ROPS standard ISO 3471:2008
FOPS Level 2 standard ISO 3449:2005
Operator's ear noise (ISO 6394) 75 dB(A)

***Accumulator meets: CRN OH 5729.1



OPTIONAL EQUIPMENT



- Rear Attachment
 - HD long drawbar 240 kg **528 lb**
- 8.5 m **28'** boom
 - Includes longer hook cable



ALLIED MANUFACTURER'S ATTACHMENTS (SHIPPED LOOSE)

- Guarding - Medford
 - Hinged cab rear screen 61 kg **135 lb**
- Hydraulic winch with drawbar Allied H12E 1800 kg **4,000 lb** (without cable)

AESS948-01

©2022 Komatsu America Corp.

AD01(POD)

01/22 (EV-1)

KOMATSU®

Note: All comparisons and claims of improved performance made herein are made with respect to the prior Komatsu model unless otherwise specifically stated.

www.komatsua.com

Komatsu America Corp. is an authorized licensee of Komatsu Ltd. Materials and specifications are subject to change without notice

KOMATSU, Komatsu Care®, KOMTRAX® and KOMTRAX Plus® are registered trademarks of Komatsu Ltd. All other trademarks and service marks used herein are the property of Komatsu Ltd., Komatsu America Corp. or their respective owners or licensees.

D155CX-8