



PC490HRD-11



Engine power

362 HP (270 kW) @1,900 rpm

Operating weight

121,695-167,176 lbs.
(55,200-75,830 kg)

Max. attachment weight

Medium-reach demolition: 11,023 lbs. (5,000 kg)
High-reach demolition: 7,385 lbs. (3,350 kg)
Extended high-reach demolition:
5,512 lbs. (2,500 kg)

High-reach demolition

High-reach demolition

Demolition is a business for experts. When working conditions get tough, first-class equipment and know-how are critical to maximizing safety throughout the day. The design of Komatsu's high-reach demolition excavators features decades of global know-how for maximum machine deployment and productivity. Built to be environment-friendly and promote safety, these machines are efficient and reliable on any high-rise demolition job site.



High-reach arm camera

Provides integrated video feed into working range indicator (WRI) system.

Precise control

The machine recognizes the working configuration and automatically adjusts the machine's response, allowing the operator to work precisely and enhance productivity.

Enhanced operator awareness

With KomVision installed as standard, as well as a travel alarm and LED work lamps, Komatsu's high-reach demolition machines help improve operator awareness on your job site.





Transportability

Komatsu’s high-reach machines have been designed to maximize durability and minimize weight. Supplied with equipment storage stands as standard equipment, the configuration can be easily changed. Able to lift their own high-reach boom onto a trailer, the machines can be moved to the next job site with minimum disruption, ready to contribute even more to your business.

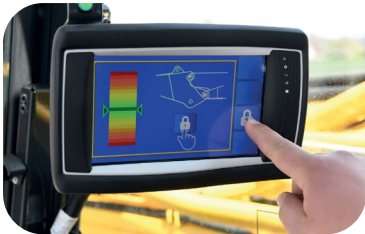


Ultimate versatility

With Komatsu’s unique K100 boom quick connection system, you can easily change up to six different working configurations, allowing you to tackle whatever project comes along.

Unique revolving frame

The upper structure is specifically designed to cope with the rigors of demolition job sites.



Machine stability monitor

360-degree WRI system with side stability pre-alert function. Demolition specification operator cab with ISO 10262 Level II OPG guards, high-impact protective glass (EN356 Gr P5A).

Tool control

The tool control system allows precise pressure and flow settings to be stored for up to 15 attachments, further enhancing your productivity.



Optimal visibility

The tilting cab is controlled by joystick buttons so operators can change the viewing angle for an efficient and simple operation.

Heavy-duty protection

Standard heavy-duty bolt-on side guards and undercovers protect all the machine’s state-of-the-art systems from damage.



Dust protection equipment

Standard engine air pre-cleaner with mesh protection for the cooling package air intakes helps keep the machine working longer when working on demolition job sites.

Hydraulically variable gauge

The standard variable hydraulic wide gauge (HWG) undercarriage makes transport and setup easy and provides an enhanced overside working range.

K100 boom change system

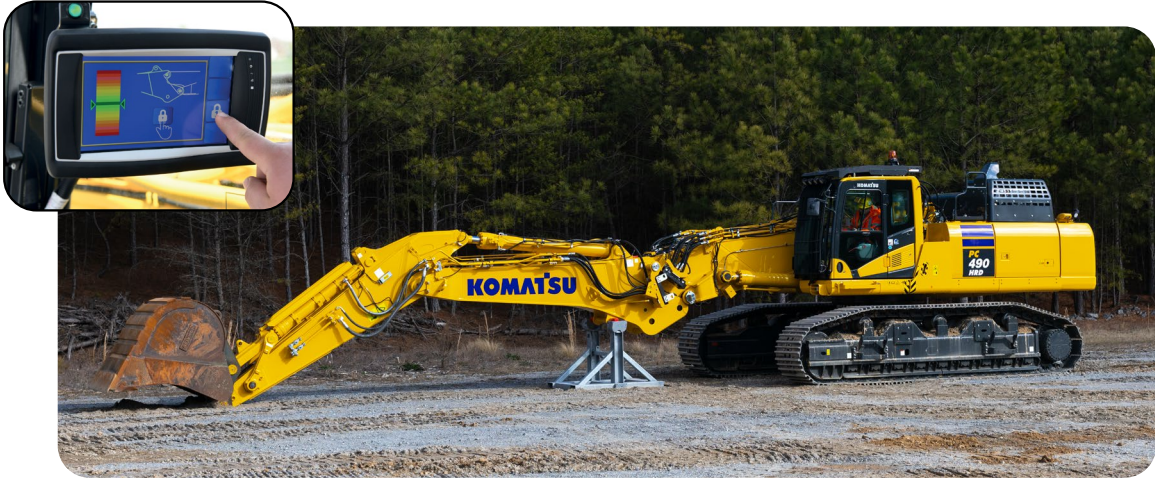
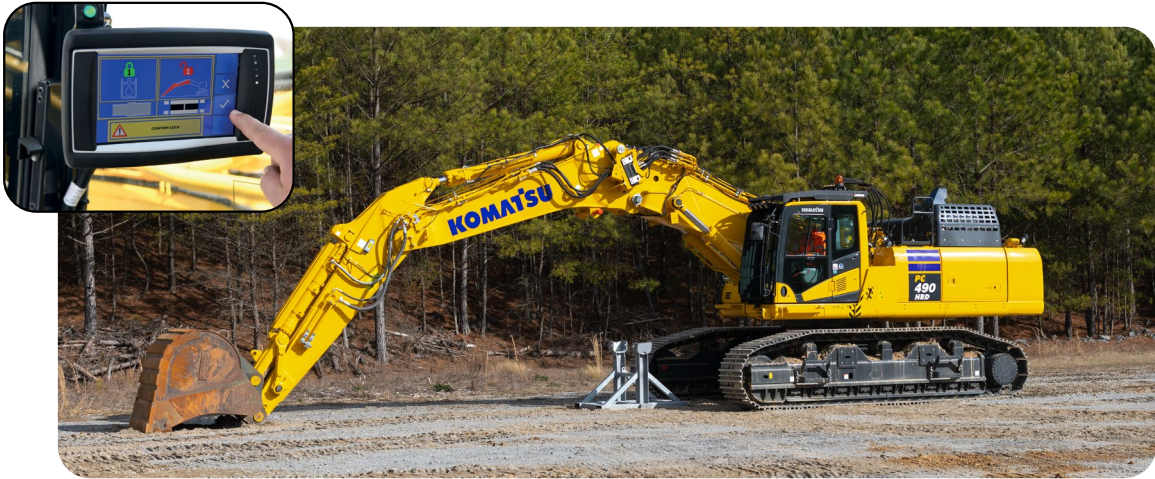
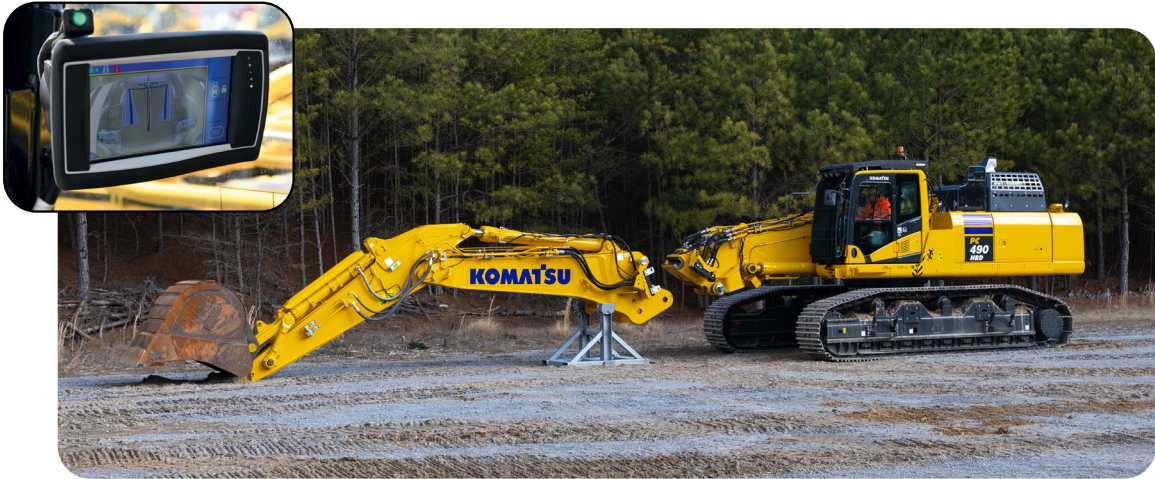


K100 allows you to change your boom configuration on site, in just a few minutes, without leaving the cab or needing outside help. A sophisticated human-machine interface (HMI) integrated in the machine's touch screen guides you when aligning the work equipment. All connections (mechanical, hydraulic and electrical) are automatic, allowing you to remain in the cab and eliminating interaction with heavy equipment at height. K100 is 100% Komatsu designed, manufactured and supported.

A boost for your efficiency

With K100 you can make full use of the versatility built in to every Komatsu high-reach demolition machine. The PC490HRD-11 can work with a range of attachments, from 5,512 lbs. (2,500 kg) at 105 ft. (32 m) maximum height up to 11,023 lbs. (5,000 kg) from ground level to 57 ft. 1 in (17.4 m) maximum height.

The K100 system allows you to easily switch between any of these configurations. In this way, you can configure the machine to suit the progress of the project, cutting down on the project's time and potentially saving the costs of an additional machine.



K100 quick boom change system

Includes Komatsu hands-free boom connections, with advanced human machine interface safety system. Low profile equipment storage stands included.

Specifications

Engine

Model	Komatsu SAA6D125E-7
Type	Common rail direct injection, water-cooled, emissionised, turbocharged, after-cooled diesel
Engine power	
at rated engine speed	1,900 rpm
ISO 14396	362 HP (270 kW)
ISO 9249 (net engine power)	359 HP (268 kW)
No of cylinders	6
Bore x stroke	4.92 x 5.91" (125 x 150 mm)
Displacement	674 in ³ (11.04 l)
Air filter type	Double element type with monitor panel dust indicator and auto dust evacuator
Fan drive type	Hydraulic, reversible
Fuel	Diesel fuel, conforming to EN590 Class 2/Grade D Paraffinic fuel capability (HVO, GTL, BTL), conforming to EN 15940:2016

Hydraulic system

Type	HydrauMind
	Closed-centre system with load sensing and pressure compensation valves
Additional circuits	2 additional circuits with proportional control are installed
Main pump	2 variable displacement piston pumps supplying boom, arm, bucket, swing and travel circuits
Maximum pump flow	2 x 91.1 gpm (2 x 345 L/min)
Relief valve settings	
Implement	5,400 psi (380 kg/cm ²)
Travel	5,400 psi (380 kg/cm ²)
Swing	4,050 psi (285 kg/cm ²)
Pilot circuit	470 psi (33 kg/cm ²)

Service refill capacities

Fuel tank	172 US gal (650 L)
Radiator	12.4 US gal (47.0 L)
Engine oil	10.0 US gal (37.0 L)
Swing drive	5.3 US gal (20.0 L)
Hydraulic tank	65.5 US gal (248 L)
Final drive (each side)	2.8 US gal (10.5 L)
Diesel exhaust fluid (DEF) tank	10.3 US gal (39.0 L)

Swing system

Type	Axial piston motor driving through planetary double reduction gearbox
Swing lock	Electrically actuated wet multidisc brake integrated into swing motor
Swing speed (restricted MR/HRD)	0 - 9.6 (3.3) rpm
Swing torque	97,358 ft lbs. (132 kNm)

Drives and brakes

Steering control	2 levers with pedals giving full independent control of each track
Drive method	Hydrostatic
Travel operation	Automatic 3-speed selection
Max. travel speeds	
Lo	1.86 mph (3.0 km/h)
Mi	2.6 mph (4.2 km/h)
Hi	3.4 mph (5.5 km/h)
Maximum drawbar pull	74,957 lbf. (34,000 kg)
Brake system	Hydraulically operated discs in each travel motor

Undercarriage

Construction	X-frame center section with box section track frames
Track assembly	
Type	Fully sealed
Shoes (each side)	49
Tension	Combined spring and hydraulic unit
Rollers	
Track rollers (each side)	HWG: 9
Carrier rollers (each side)	HWG: 3

Environment

Engine emissions	Fully complies with EU Stage V exhaust emission regulations
Noise levels	
LwA external	107 dB(A) (2000/14/EC Stage II)
LpA operator ear	71 dB(A) (ISO 6396 dynamic test)
Vibration levels (EN 12096:1997)	
Hand/arm	≤ 2.5 m/s ² (uncertainty K = 0.25 m/s ²)
Body	≤ 0.5 m/s ² (uncertainty K = 0.25 m/s ²)
Contains fluorinated greenhouse gas HFC-134a (GWP 1430) Quantity of gas 0.8 kg; CO ₂ equivalent 11.4 t	

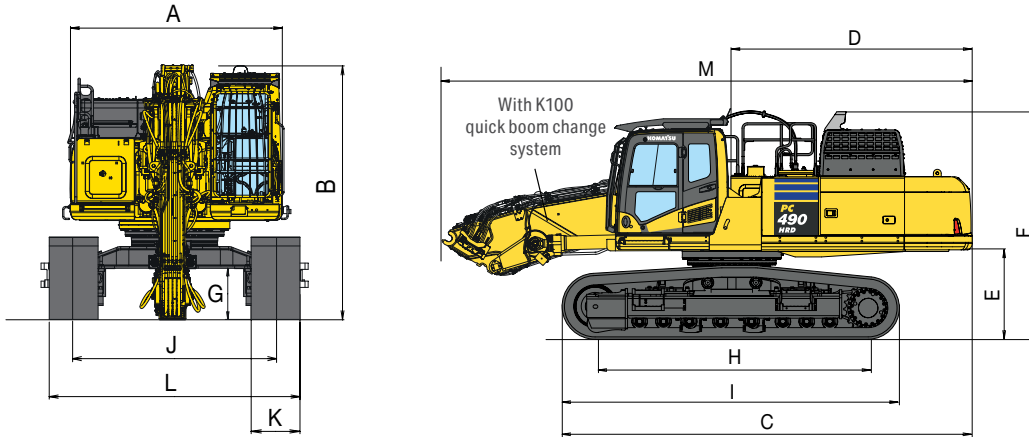
Operating weight (approximate) with K100 quick boom change system

	Extended high-reach demolition		High-reach demolition		Medium-reach demolition		Excavation boom	
Triple grouser shoes	Operating weight	Ground pressure	Operating weight	Ground pressure	Operating weight	Ground pressure	Operating weight	Ground pressure
28" (700 mm) HWG	167,176 lbs. (75,830 kg)	15.65 psi (1.10 kg/cm ²)	160,540 lbs. (72,820 kg)	15.08 psi (1.06 kg/cm ²)	164,024 lbs. (74,400 kg)	15.36 psi (1.08 kg/cm ²)	148,712 lbs. (67,455 kg)	13.94 psi (0.98 kg/cm ²)
Attachment weight	5,512 lbs. (2,500 kg)		7,385 lbs. (3,350 kg)		11,023 lbs. (5,000 kg)		11,023 lbs. (5,000 kg)	

Operating weight, including specified work equipment, operator, lubricant, coolant, full fuel tank and the standard equipment



Basic dimensions



Transport dimensions

	Undercarriage	HWG
A	Overall width of upper structure ¹	9' 10" (2,995 mm)
B	Overall height of cab, with FOPS	11' 10" (3,600 mm)
	Overall height of cab, without FOPS	11' 2" (3,390 mm)
C	Overall length of basic machine	21' 11" (6,690 mm)
D	Tail swing radius	12' 7" (3,830 mm)
E	Clearance under counterweight	4' 8" (1,415 mm)
F	Machine tail height	12' (3,660 mm)
G	Ground clearance	1' 8" (500 mm)
H	Track length on ground	15' 4" (4,680 mm)
I	Track length	18' 8" (5,695 mm)
J	Track gauge ²	7' 6"-10' 9" (2,280 - 3,280 mm)
K	Track shoe width	2' 4" (700 mm)
L	Overall track width with 28" (700 mm) shoes ²	9' 9"-13' 1" (2,980 - 3,980 mm)
M	Transport length	27' 9" (8,445 mm)
	Transport weight 28" (700 mm) shoes	128,199 lbs. (58,150 kg ³)

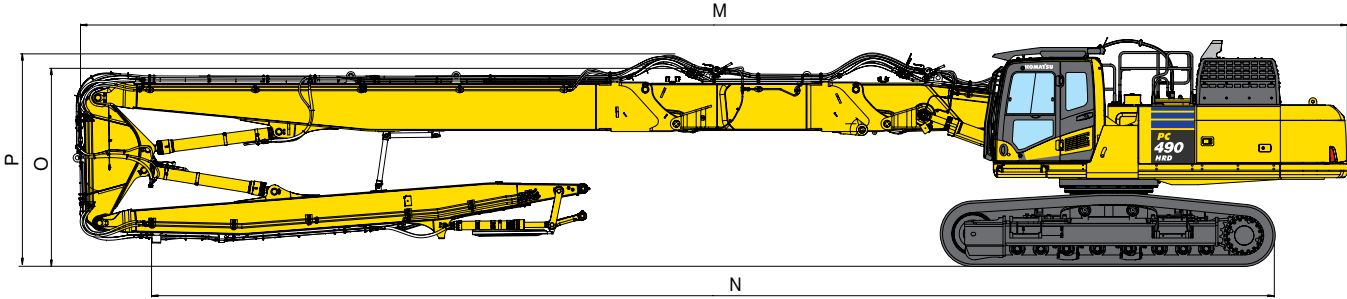
1. Overall width of upper structure excludes side guards, handrails and mirrors. Side guards can be removed if transport width of less than 9'10" (3 m) is required

2. Undercarriage in retracted – extended position

3. Transport weight with K100 boom change system, including single piece counterweight

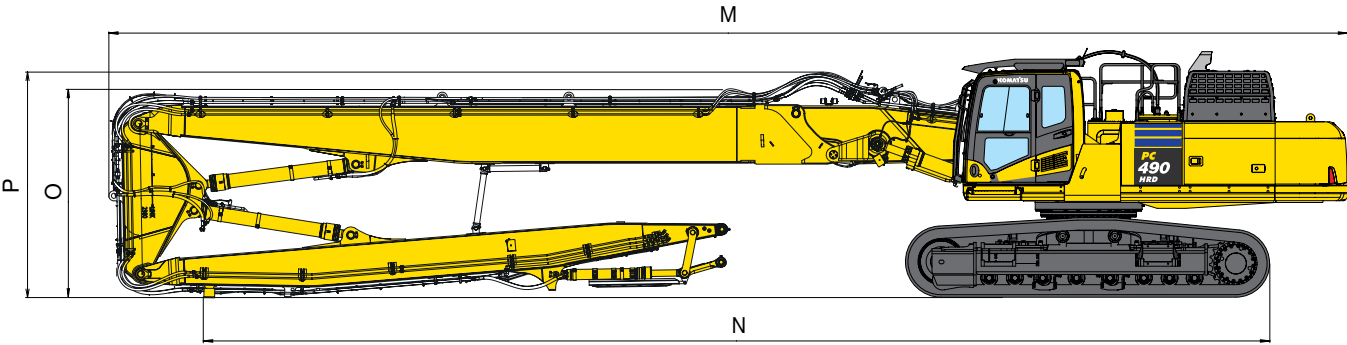
Transport dimensions

Extended high-reach demolition



		With K100 quick boom change system
M	Overall transport length	76' 0" (23,170 mm)
N	Transport length on ground	67' 3" (20,495 mm)
O	Transport height (to top of boom)	10' 10" (3,310 mm)
P	Transport height (to top of hose)	10' 10" (3,310 mm)
Transport weight (HWG undercarriage, 700 mm shoes)		161,500 lbs. (73,255 kg)

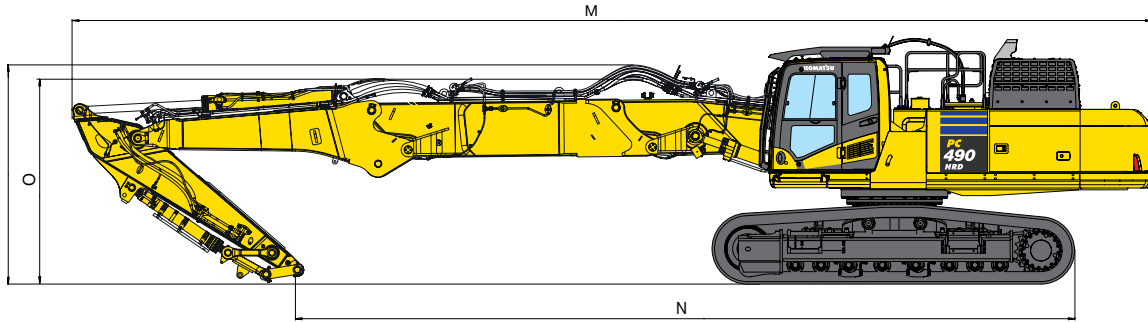
High-reach demolition



		With K100 quick boom change system
M	Overall transport length	62' 11" (19,170 mm)
N	Transport length on ground	53' 7" (16,325 mm)
O	Transport height (to top of boom)	10' 10" (3,310 mm)
P	Transport height (to top of hose)	10' 10" (3,310 mm)
Transport weight (HWG undercarriage, 700 mm shoes)		152,990 lbs. (69,395 kg)

Transport dimensions

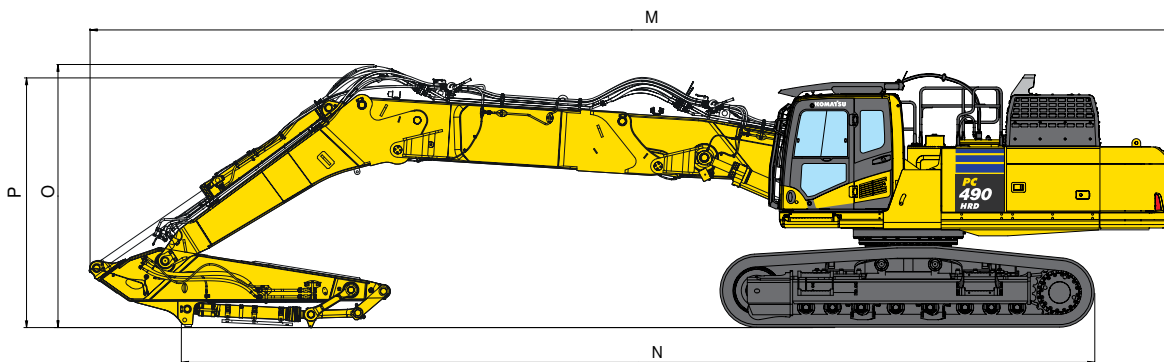
Medium-reach demolition — straight position



With K100 quick boom change system

M	Overall transport length	56' 7" (17,250 mm)
N	Transport length on ground	42' 7" (12,980 mm)
O	Transport height (to top of boom)	11' 6" (3,515 mm)
P	Transport height (to top of hose)	11' 6" (3,515 mm)
	Transport weight (HWG undercarriage, 700 mm shoes)	152,835 lbs. (69,325 kg)

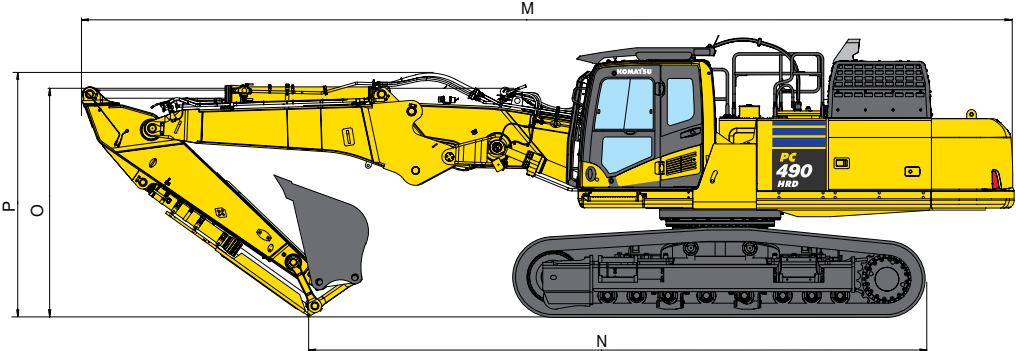
Medium-reach demolition — cranked position



With K100 quick boom change system

M	Overall transport length	54' 1" (16,480 mm)
N	Transport length on ground	39' 2" (11,935 mm)
O	Transport height (to top of boom)	12' 2" (3,700 mm)
P	Transport height (to top of hose)	12' 2" (3,700 mm)
	Transport weight (HWG undercarriage, 700 mm shoes)	152,835 lbs. (69,325 kg)

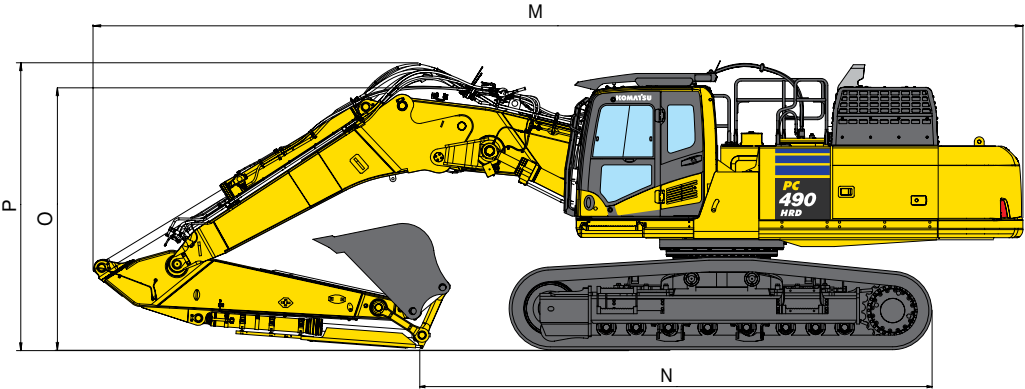
Excavation boom — straight position



With K100 quick boom change system

M	Overall transport length	43' 4" (13,210 mm)
N	Transport length on ground	28' 6" (8,690 mm)
O	Transport height (to top of boom)	11' 6" (3,515 mm)
P	Transport height (to top of hose)	11' 6" (3,515 mm)
	Transport weight (HWG undercarriage, 700 mm shoes, incl 1,915 kg bucket)	148,547 lbs. (67,380 kg)

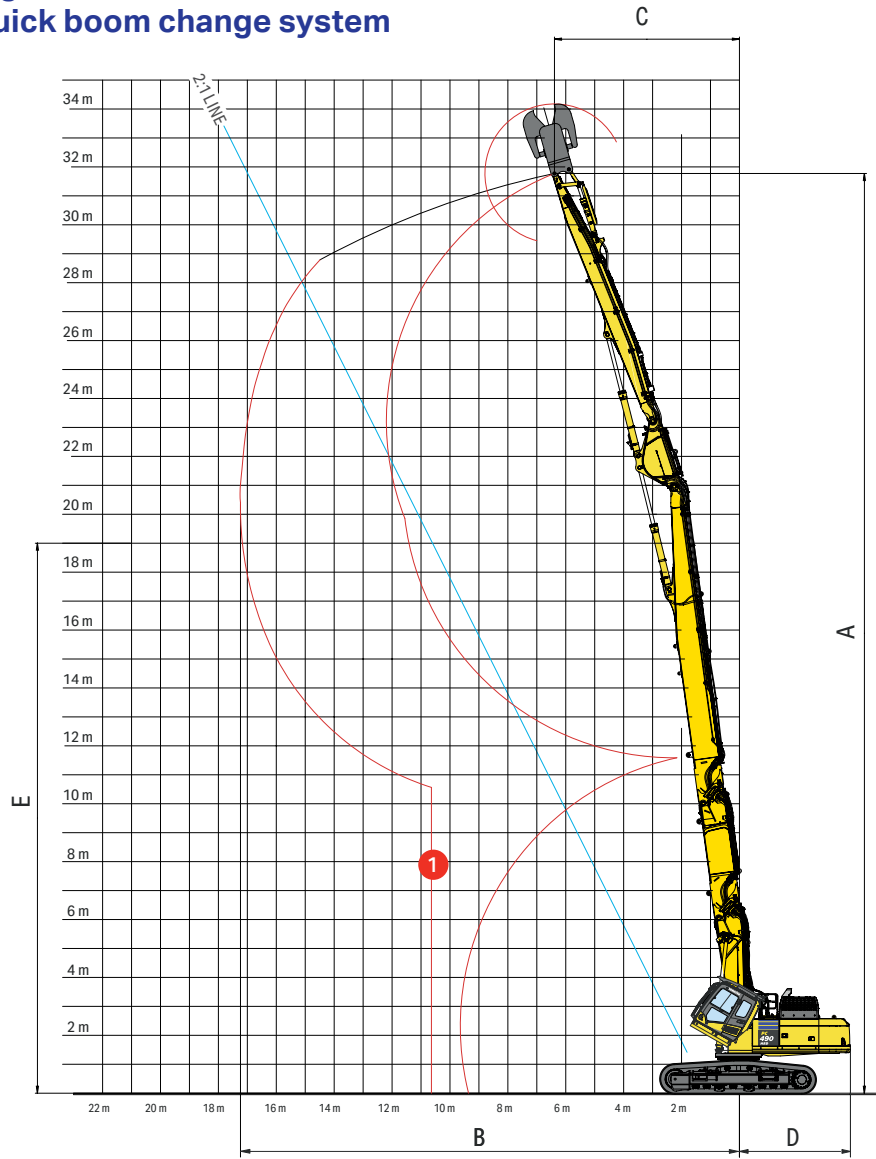
Excavation boom — cranked position



With K100 quick boom change system

M	Overall transport length	41' 3" (12,565 mm)
N	Transport length on ground	22' 5" (6,820 mm)
O	Transport height (to top of boom)	11' 10" (3,610 mm)
P	Transport height (to top of hose)	11' 10" (3,610 mm)
	Transport weight (HWG undercarriage, 700 mm shoes, incl 1,915 kg bucket)	148,547 lbs. (67,380 kg)

Extended high-reach demolition with K100 quick boom change system



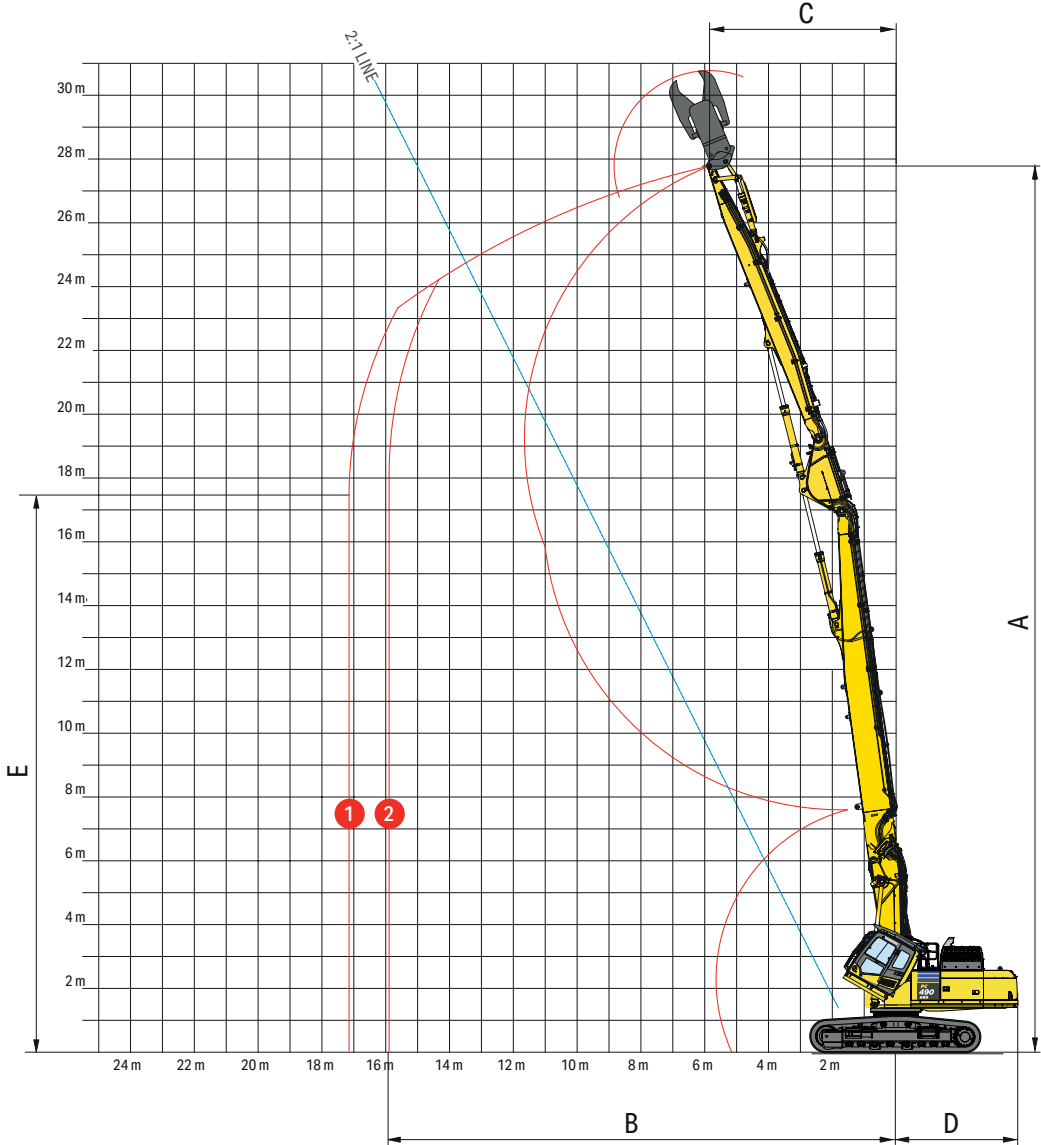
1 Over front with 5,512 lb (2,500 kg) work tool installed

Extended high-reach demolition

HWG undercarriage

	Over front	Over side
A Max. height (to pin at arm end)	104' 3" (31,775 mm)	104' 3" (31,775 mm)
B Max. forward reach (max. tool weight)	56' 6" (17,235 mm)	51' 2" (15,595 mm)
C Min. swing radius of arm end pin at max. height	21' 0" (6,390 mm)	21' 0" (6,390 mm)
D Tail swing radius	12' 8" (3,860 mm)	12' 8" (3,860 mm)
E Height at max. reach	62' 3" (18,980 mm)	65' 3" (19,880 mm)
Reach at max. height (2:1 line)	50' 1" (15,275 mm)	50' 1" (15,275 mm)
Max. height (2:1 line)	93' 0" (28,350 mm)	93' 0" (28,350 mm)

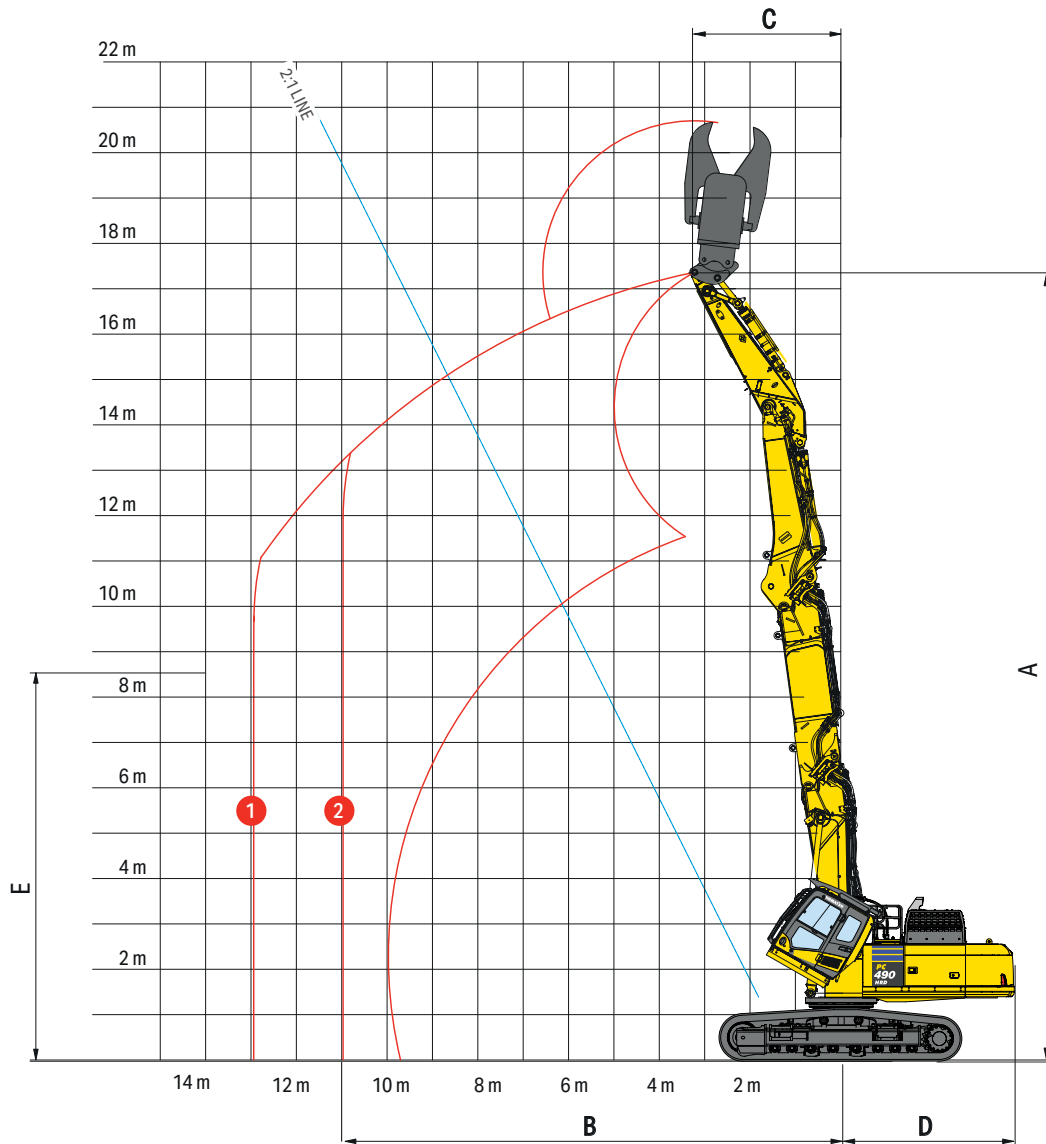
**High-reach demolition
with K100 quick boom change system**



- 1** Over front with 5,512 lb (2,500 kg) work tool installed
- 2** Over front with 7,385 lb (3,350 kg) work tool installed

High-reach demolition	HWG undercarriage	
	Over front	Over side
A Max. height (to pin at arm end)	91' 3" (27,810 mm)	91' 3" (27,810 mm)
B Max. forward reach (max. tool weight)	54' 11" (16,725 mm)	47' 2" (14,370 mm)
C Min. swing radius of arm end pin at max. height	19' 2" (5,845 mm)	19' 2" (5,845 mm)
D Tail swing radius	12' 8" (3,860 mm)	12' 8" (3,860 mm)
E Height at max. reach	43' 11" (13,385 mm)	53' 0" (16,150 mm)
Reach at max. height (2:1 line)	44' 3" (13,490 mm)	44' 3" (13,490 mm)
Max. height (2:1 line)	81' 4" (24,775 mm)	81' 4" (24,775 mm)

Medium-reach demolition — straight position with K100 quick boom change system



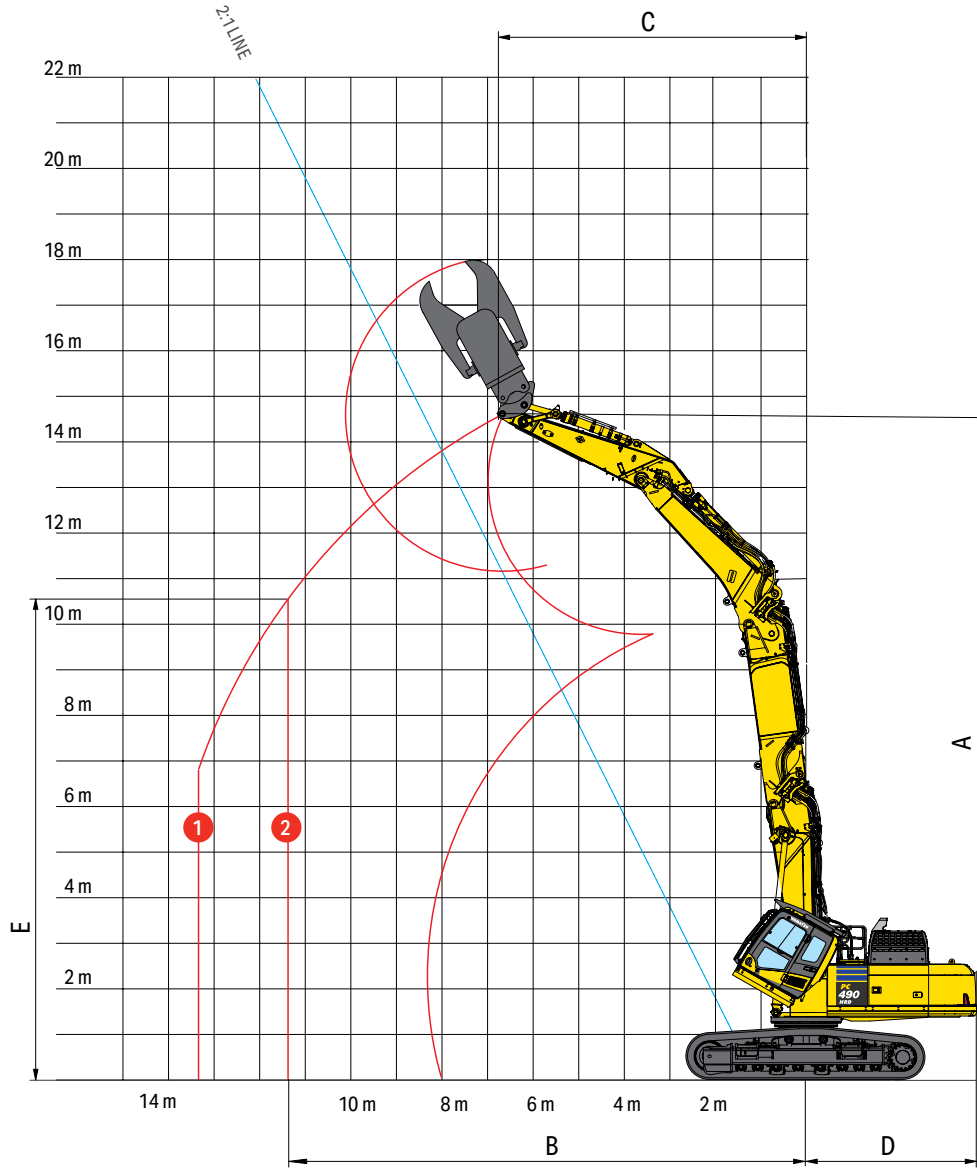
- 1 Over front with 6,613 lb (3,000 kg) work tool installed
- 2 Over front with 11,023 lb (5,000 kg) work tool installed

Medium-reach demolition – straight position

HWG undercarriage

	Over front	Over side
A Max. height (to pin at arm end)	57' 1" (17,395 mm)	57' 1" (17,395 mm)
B Max. forward reach (max. tool weight)	38' 2" (11,630 mm)	32' 11" (10,020 mm)
C Min. swing radius of arm end pin at max. height	10' 7" (3,230 mm)	10' 7" (3,230 mm)
D Tail swing radius	12' 8" (3,860 mm)	12' 8" (3,860 mm)
E Height at max. reach	20' 3" (6,180 mm)	32' 5" (9,890 mm)
Reach at max. height (2:1 line)	28' 5" (8,665 mm)	28' 5" (8,665 mm)
Max. height (2:1 line)	49' 8" (15,130 mm)	49' 8" (15,130 mm)

Medium-reach demolition — cranked position with K100 quick boom change system



- 1 Over front with 6,613 lb (3,000 kg) work tool installed
- 2 Over front with 11,023 lb (5,000 kg) work tool installed

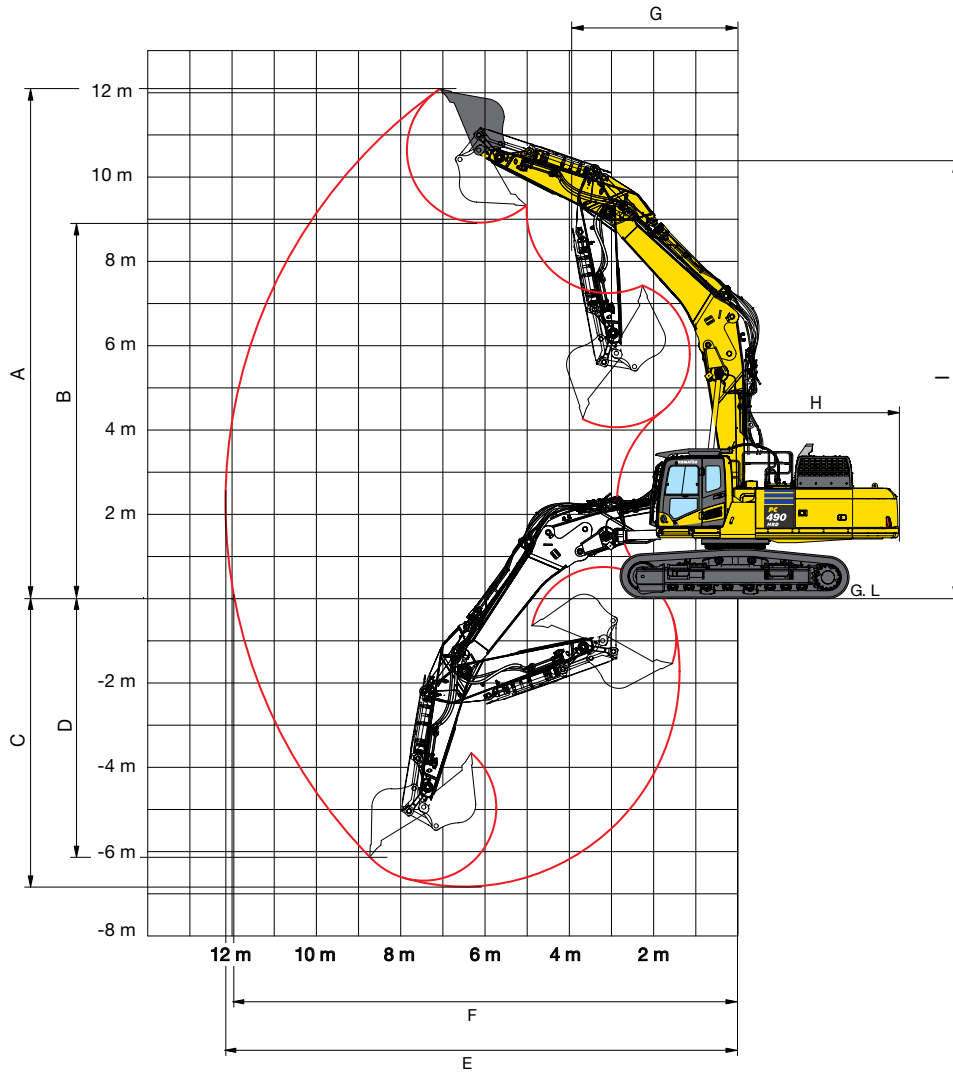
Medium-reach demolition – cranked position

HWG undercarriage

	Over front	Over side
A Max. height (to pin at arm end)	48' 1" (14,640 mm)	48' 1" (14,640 mm)
B Max. forward reach (max. tool weight)	39' 5" (12,020 mm)	34' 7" (10,530 mm)
C Min. swing radius of arm end pin at max. height	21' 11" (6,670 mm)	21' 11" (6,670 mm)
D Tail swing radius	12' 8" (3,860 mm)	12' 8" (3,860 mm)
E Height at max. reach	31' 7" (9,630 mm)	23' 0" (7,005 mm)
Reach at max. height (2:1 line)	26' 4" (8,025 mm)	26' 4" (8,025 mm)
Max. height (2:1 line)	45' 4" (13,820 mm)	45' 4" (13,820 mm)

Working range

Excavation boom — cranked position

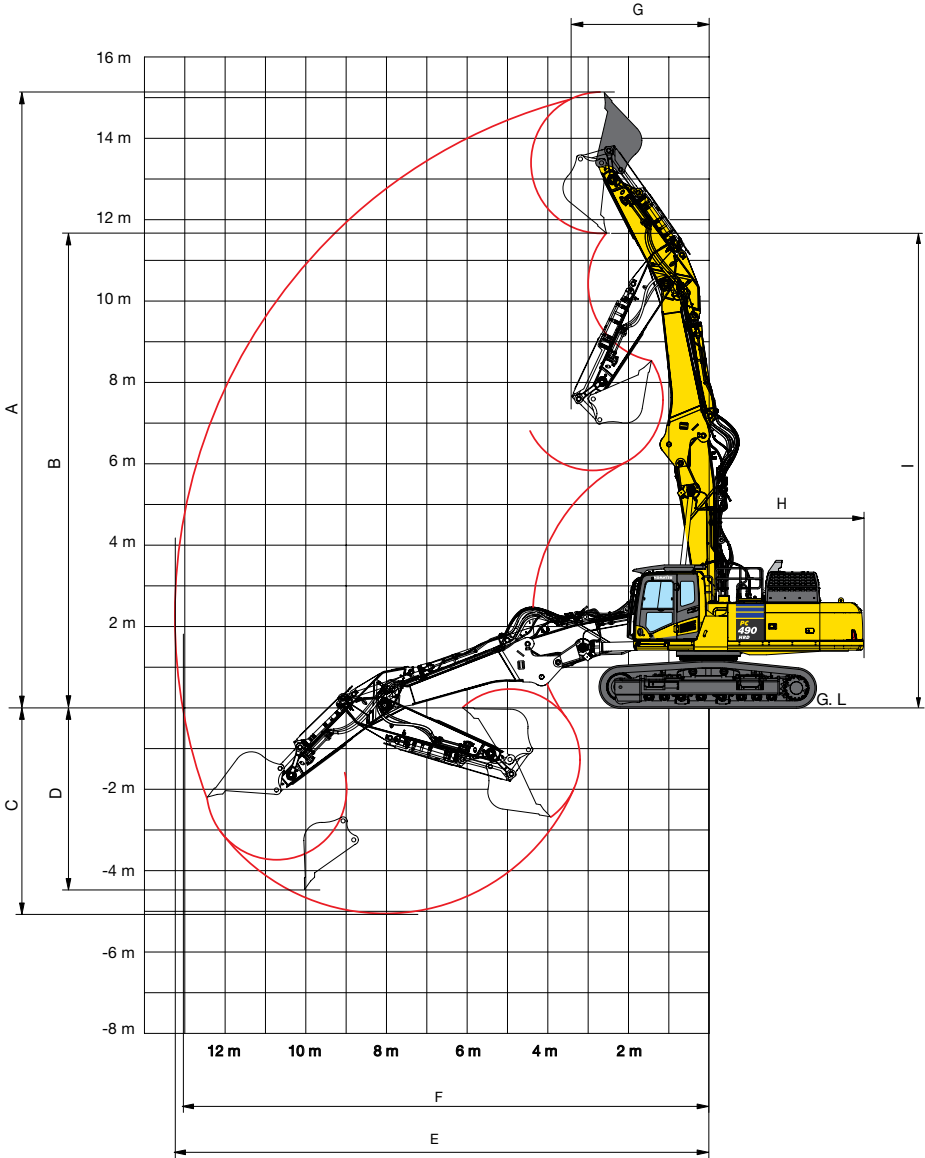


Arm length 11'2" (3.4 m)

With K100 quick boom change system

Undercarriage	HWG
A Max. digging height	39' 9" (12,120 mm)
B Max. dumping height	30' 9" (9,360 mm)
C Max. digging depth	22' 4" (6,800 mm)
D Max. vertical wall digging depth	20' 2" (6,145 mm)
E Max. digging reach	39' 11" (12,155 mm)
F Max. digging reach at ground level	39' 2" (11,935 mm)
G Min. swing radius (bucket loaded)	12' 7" (3,840 mm)
H Tail swing radius	12' 8" (3,860 mm)
I Max. height at min. swing radius	33' 6" (10,215 mm)

Excavation boom — straight position



Arm length 11'2" (3.4 m)

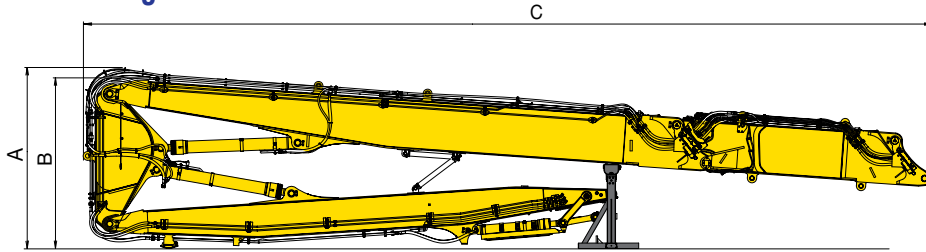
With K100 quick boom change system

Undercarriage	HWG
A Max. digging height	49' 7" (15,105 mm)
B Max. dumping height	38' 2" (11,630 mm)
C Max. digging depth	16' 8" (5,090 mm)
D Max. vertical wall digging depth	14' 9" (4,490 mm)
E Max. digging reach	43' 6" (13,250 mm)
F Max. digging reach at ground level	42' 10" (13,060 mm)
G Min. swing radius (bucket loaded)	11' 2" (3,415 mm)
H Tail swing radius	12' 8" (3,860 mm)
I Max. height at min. swing radius	37' 9" (11,510 mm)

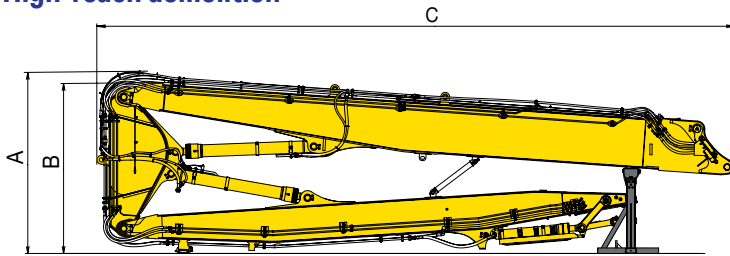
PC490HRD-11

With K100 quick boom change system

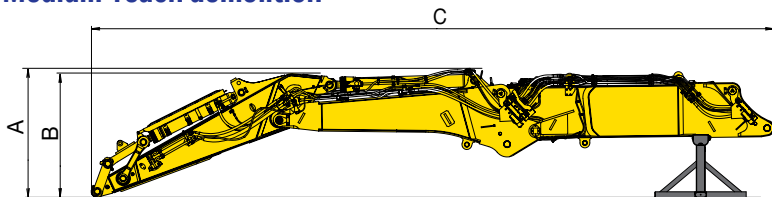
Extended high-reach demolition



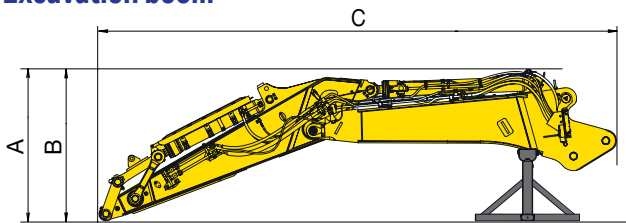
High-reach demolition



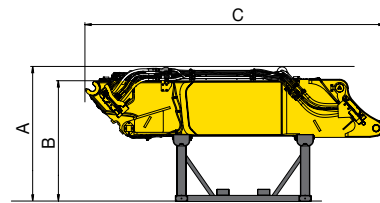
Medium-reach demolition



Excavation boom



Extension



Work equipment storage dimensions

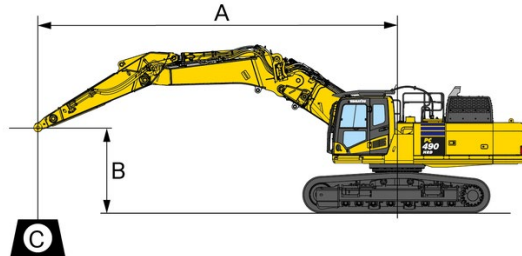
	Extended high reach demolition	High-reach demolition	Medium-reach demolition	Excavation boom	Extension
A	10' 10" (3,310 mm)	10' 10" (3,310 mm)	7' 4" (2,230 mm)	7' 6" (2,285 mm)	7' 2" (2,180 mm)
B	10' 10" (3,310 mm)	10' 10" (3,310 mm)	7' 4" (2,230 mm)	7' 6" (2,285 mm)	7' 2" (2,180 mm)
C	50' 11" (15,525 mm)	37' 10" (11,535 mm)	38' 9" (11,805 mm)	25' 8" (7,830 mm)	15' 10" (4,835 mm)
Transport weight*	31,812 lbs. (14,430 kg)	23,303 lbs. (10,570 kg)	23,149 lbs. (10,500 kg)	14,528 lbs. (6,590 kg)	9,348 lbs. (4,240 kg)

* Transport weight includes equipment stands and excludes attachment/bucket



Lifting capacity

Excavation boom — cranked position, no boom extension



- A – Reach from swing center Cf – Rating over front
- B – Bucket hook height Cs – Rating over side
- C – Lifting capacities Max. – Rating at maximum reach

Track gauge in extended position

Weight of bucket linkage, bucket cylinder, including cylinder guard: 1,256 lbs. (570 kg)

K100 HRD counterweight 35,825 lbs. (16,250 kg)

Specification: 11' 2" (3,400 mm) arm, no bucket, 28" (700mm) shoes (triple grouser), hydraulic wide gauge U/C

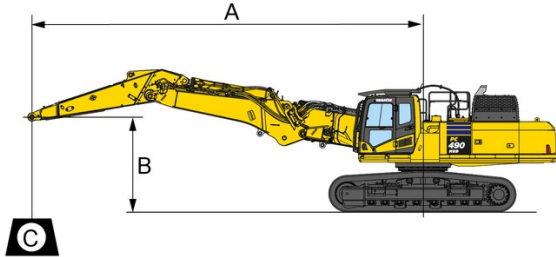
Unit: lbs. kg

HEIGHT (B)	14'9" 4.5 m		19'8" 6.0 m		24'7" 7.5 m		29'6" 9.0 m		34'5" 10.5 m		Max. reach	Max.	
	F	S	F	S	F	S	F	S	F	S		F	S
31' 2" 9 m					* 25,463 11,550	* 25,463 11,550					26' 1" 7.96 m	* 19,070 8,650	* 19,070 8,650
24' 7" 7.5 m			* 39,463 17,900	* 39,463 17,900	* 35,053 15,900	* 35,053 15,900	* 19,290 8,750	* 19,290 8,750			29' 8" 9.03 m	* 18,629 8,450	* 18,629 8,450
19' 8" 6.0 m	* 54,234 24,600	* 54,234 24,600	* 39,463 19,700	* 39,463 19,700	* 37,368 16,950	* 37,368 16,950	* 31,636 14,350	* 31,636 14,350			32' 0" 9.75 m	* 18,850 8,550	* 18,850 8,550
14' 9" 4.5 m	* 65,698 29,800	* 65,698 29,800	* 48,612 22,050	* 48,612 22,050	* 40,014 18,150	* 40,014 18,150	* 34,723 15,750	* 32,407 14,700			33' 6" 10.2 m	* 19,511 8,850	* 19,511 8,850
9' 11" 3 m			* 53,462 24,250	* 53,462 24,250	* 42,549 19,300	* 40,565 18,400	* 36,046 16,350	* 31,526 14,300			34' 2" 10.41 m	* 20,613 9,350	* 20,613 9,350
4' 11" 1.5 m			* 55,997 25,400	* 53,021 24,050	* 44,313 20,100	* 39,242 17,800	* 36,817 16,700	* 30,754 13,950			34' 1" 10.4 m	* 23,589 10,700	* 23,589 10,700
0' 0 m	* 40,234 18,250	* 40,234 18,250	* 55,777 25,300	* 51,698 23,450	* 44,533 20,200	* 38,250 17,350	* 36,707 16,650	* 30,093 13,650			33' 4" 10.17 m	* 25,243 11,450	* 25,243 11,450
-4' 11" -1.5 m	* 55,336 25,100	* 55,336 25,100	* 53,131 24,100	* 51,257 23,250	* 36,266 19,450	* 37,699 17,100	* 35,053 15,900	* 29,762 13,500			31' 10" 9.7 m	* 29,672 13,500	* 27,007 12,250
-9' 11" -3.0 m	* 57,871 26,250	* 57,871 26,250	* 47,840 21,700	* 47,840 21,700	* 38,912 127,650	* 37,699 17,100					29' 5" 8.96 m	* 30,865 14,000	* 29,983 13,600
-14' 9" -4.5 m			* 39,132 17,750	* 39,132 17,750	* 31,085 14,100	* 31,085 14,100					25' 9" 7.86 m	* 28,881 13,100	* 28,881 13,100

* Indicates that load is limited by hydraulic capacity rather than tipping.

Ratings are based on SAE Standard No. J1097. Rated loads do not exceed 87% of hydraulic lift capacity or 75% of tipping load. Lifting capacities are stated in kg, on the tip of the bare arm, for machine on firm, level supporting surface, bold lift capacities are in lbs. To calculate lifting capacity including bucket cylinder & linkage and bucket or attachment, subtract weight of bucket linkage, cylinder, cylinder guard and bucket or attachment from values in table.

Excavation boom — straight position, no boom extension



- A – Reach from swing center Cf – Rating over front
- B – Bucket hook height Cs – Rating over side
- C – Lifting capacities Max. – Rating at maximum reach

Track gauge in extended position
 Weight of bucket linkage, bucket cylinder, including cylinder guard: 1,256 lbs. (570 kg)
 K100 HRD counterweight 35,825 lbs. (16,250 kg)

Specification: 11' 2" (3,400 mm) arm, no bucket, 28" (700mm) shoes (triple grouser), hydraulic wide gauge U/C

Unit: lbs. kg

HEIGHT (B)	14'9" 4.5 m		19'8" 6.0 m		24'7" 7.5 m		29'6" 9.0 m		34'5" 10.5 m		Max. reach	Max.	
	F	S	F	S	F	S	F	S	F	S		F	S
31' 2" 9 m	* 31,967 14,500	* 31,967 14,500	* 34,502 15,650	* 34,502 15,650	* 34,833 15,800	* 34,833 15,800	* 27,778 12,600	* 27,778 12,600			30' 10" 9.39 m	* 19,952 9,050	* 19,952 9,050
24' 7" 7.5 m	* 36,817 16,700	* 36,817 16,700	* 38,581 17,500	* 38,581 17,500	* 38,470 17,450	* 38,470 17,450	* 35,164 15,950	* 32,298 14,650			33' 10" 10.3 m	* 19,070 8,650	* 19,070 8,650
19' 8" 6.0 m			* 52,139 23,650	* 52,139 23,650	* 42,659 19,350	* 41,447 18,800	* 36,270 16,450	* 31,747 14,400	* 29,321 13,300	* 25,243 11,450	35' 11" 10.94 m	* 18,739 8,500	* 18,739 8,500
14' 9" 4.5 m			* 55,226 25,050	* 54,675 24,800	* 44,093 20,000	* 39,904 18,100	* 36,817 16,700	* 30,975 14,050	* 31,416 14,250	* 24,912 11,300	37' 3" 11.4 m	* 18,739 8,500	* 18,739 8,500
9' 11" 3 m					* 44,533 20,200	* 38,581 17,500	* 36,817 16,700	* 30,203 13,700	* 30,865 14,000	* 24,582 11,150	37' 10" 11.53 m	* 19,070 8,650	* 19,070 8,650
4' 11" 1.5 m					* 43,431 19,700	* 34,479 17,000	* 35,825 16,250	* 29,542 13,400	* 29,652 13,450	* 24,251 11,000	37' 10" 11.22 m	* 19,842 9,000	* 19,842 9,000
0' 0 m			*47,730 21,650	*47,730 21,650	* 40,455 18,350	* 36,927 16,750	* 33,510 15,200	* 29,211 13,250	* 27,007 12,250	* 24,030 10,900	37' 2" 11.32 m	* 21,059 9,550	* 21,059 9,550
-4' 11" -1.5 m			*40,124 18,200	*40,124 18,200	* 35,274 16,000	* 35,274 16,000	* 29,321 13,300	* 29,101 13,200	* 22,377 10,150	* 22,377 10,150	35' 9" 10.9 m	* 19,401 8,800	* 19,401 8,800
-9' 11" -3.0 m					* 27,888 12,650	* 27,888 12,650	* 22,708 10,300	* 22,708 10,300					
-14' 9' -4.5 m													

* Indicates that load is limited by hydraulic capacity rather than tipping.
 Ratings are based on SAE Standard No. J1097. Rated loads do not exceed 87% of hydraulic lift capacity or 75% of tipping load. Lifting capacities are stated in kg, on the tip of the bare arm, for machine on firm, level supporting surface, bold lift capacities are in lbs. To calculate lifting capacity including bucket cylinder & linkage and bucket or attachment, subtract weight of bucket linkage, cylinder, cylinder guard and bucket or attachment from values in table.

Standard and optional equipment

Engine

Komatsu SAA6D125E-7 turbocharged common rail direct injection diesel engine	●
EU Stage V compliant/ /US EPA T4F compliant	●
Remote hydraulically driven, variable speed, reversible cooling fan	●
Automatic engine warm-up system	●
Engine overheat prevention system	●
Fuel control dial	●
Auto-deceleration function	●
Adjustable idle shutdown	●
Engine key stop	●
Alternator 24 V / 90 A	●
Starter motor 24 V / 11 kW	●
Batteries 2 × 12 V / 180 Ah	●

Hydraulic system

Electronic closed-center load sensing (E-CLSS) hydraulic system (HydraMind)	●
Pump and engine mutual control (PEMC) system	●
6-working mode selection system; power mode, economy mode, breaker mode, attachment power and attachment economy mode, and lifting mode	●
Power Max function	●
Two-mode boom control	●
Inline filter for hydraulics	●
High pressure attachment circuit (open/close)	●
Medium pressure attachment circuit (rotate)	●
Drain line for hydraulic attachment rotation motors	●
Prepared for hydraulic quick coupler	●
PPC wrist control levers for arm, boom, bucket and swing, with sliding proportional control for attachments and three auxiliary buttons	●
PPC pedal for high-reach demolition mid link	●
Komatsu Integrated Attachment Control system (KIAC) with programmable pressure and flow settings for up to 15 attachment memory settings	●

Drives and brakes

Hydrostatic, 3-speed travel system with automatic shift and planetary gear type final drives, and hydraulic travel and parking brakes	●
PPC control levers and pedals for steering and travel	●

Undercarriage

Track roller guards	●
Track frame under-guards	●
Hydraulic adjustable wide gauge (HWG) undercarriage	●
28" (700 mm) triple grouser track shoes	●
Full length track roller guards (standard with HWG undercarriage)	●

Cab

Demolition specification Safety SpaceCab™, with ISO10262 level 2 FOPS guards and roof screen wash wipe system. Fixed, one piece front window. Front and roof window fitted with high impact protective laminated glass, compliant with EN356 Grade P5A, in accordance with EN474 Part 1: Annex G.	●
Tilting cab, controlled by wrist controller buttons, with soft start/soft stop function, including hydraulic power hoses and cab raise cylinders	●
Heated, high back air suspension seat with lumbar support, console mounted height adjustable arm rests, and retractable seat belt	●
Automatic climate control system	●
12/24 V power supplies	●
Beverage holder and magazine rack	●
Hot and cool box	●
Auxiliary input (MP3 jack)	●
Parallel action wiper with flick wipe function operated by wrist controller button	●
AM/FM radio with auxiliary input (MP3 jack)	●

LED lighting system

Working lights: 2 revolving frame (front), 2 boom, 4 cab roof (front), 1 cab roof (rear), 2 revolving frame side (right), 1 counterweight (rear), 1 revolving frame side (left), beacon	●
---	---

Work equipment

Demolition first boom: Includes demolition first boom, fitted with Komatsu hydraulic quick connect system and hydraulic pipework suitable for operation of rotating crusher attachment	●
High-reach demolition: Includes heavy-duty demolition second boom, heavy-duty mid link and heavy-duty demolition arm, to fit onto demolition first boom. Includes work equipment stands compliant with EN474 Part 1: Annex G	○
Heavy-duty extension boom: Includes extension boom to fit onto demolition first boom, with Komatsu hydraulic quick connect system, piping for hydraulic quick coupler and piping for hose burst valves. Includes equipment stand	○
Excavation boom: Includes two position excavation boom to fit onto demolition first boom, 133.9 in (3,400 mm), with piping for hydraulic quick-coupler, arm cylinder safety valve. Includes work equipment stands compliant with EN474 Part 1: Annex G	○
K100 quick boom change system: Includes Komatsu hands-free boom connections, with advanced HMI safety system. Low profile equipment storage stands included	●

Service and maintenance

Automatic fuel line de-aeration	●
Double element type air cleaner with dust indicator and auto dust evacuator	●
Komtrax – Komatsu wireless monitoring system	●
Komatsu Care – a maintenance program for Komatsu customers	●
Multifunction video compatible colour monitor with Equipment Management and Monitoring System (EMMS) and efficiency guidance	●
Service points	●

Other equipment

Heavy-duty revolving frame with heavy-duty demolition under covers and side guard protection	●
Remote greasing for swing circle and pins	●
Electric refuelling pump with automatic shut off function	●
Standard color scheme and decals	●
Parts book and operator manual	●
One piece demolition specification counterweight (35,825 lbs./16.25 t). Fitted as standard with K100 quick boom change system	●
Dust resistance kit, including turbine type engine air pre cleaner, mesh protection to air intakes	●
Working range indicator (WRI) system with four-color graphical display and warning buzzer. Compatible with standard high-reach arm camera. 15 attachment memory settings	●
KomVision surround view system	●
Emergency engine stop switch	●
Electric horn	●
Lockable fuel cap and covers	●
Audible travel alarm	●
Boom, arm and mid link safety valves, compliant with EN474 Part 1: Annex G	●
Large handrails, rearview mirrors	●
Battery main switch	●
Emergency cab lower switch (internal and external)	●
High-reach arm end camera	●

Further equipment on request

- standard equipment
- optional equipment

Product designs, specifications and/or data in this document are provided for informational purposes only and are not warranties of any kind. Product designs and/or specifications may be changed at any time without notice. The only warranties that apply to sales of products and services are Komatsu's standard written warranties, which will be furnished upon request.

Komatsu and other trademarks and service marks used herein are the property of Komatsu Ltd. or one of its affiliates, or the respective owners or licensees.

KOMATSU

[komatsu.com](https://www.komatsu.com)

