



FH100-1, FH120-1, FH135-1, FH160-1



Hydro-Static diesel
powered forklift

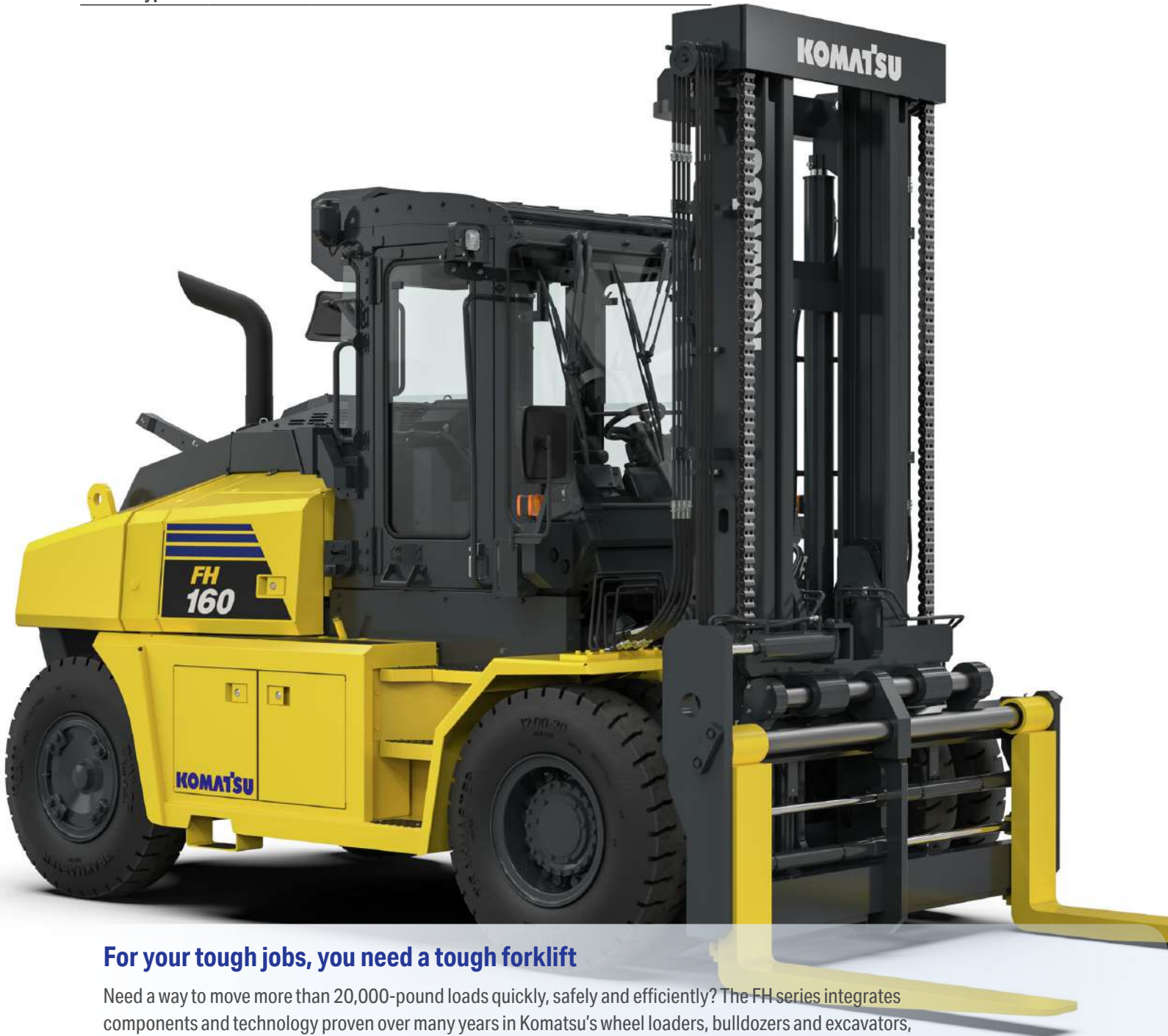
Rated capacity range
22,000-35,000 lbs.
(10,000-16,000 kg)

Load center
24 in (600 mm)

Power type
Tier 4 final diesel

FH100-160-1

	FH100-1	FH120-1	FH135-1	FH160-1
Tire type	Pneumatic	Pneumatic	Pneumatic	Pneumatic
Rated capacity	22,000 lbs.	26,400 lbs.	30,000 lbs.	35,000 lbs.
Power type	Diesel	Diesel	Diesel	Diesel



For your tough jobs, you need a tough forklift

Need a way to move more than 20,000-pound loads quickly, safely and efficiently? The FH series integrates components and technology proven over many years in Komatsu's wheel loaders, bulldozers and excavators, so you know they're built tough. The hydrostatic (HST) drive system allows FH100-160-1 series forklifts to shuttle back and forth in high-cycle operations with virtually no wear on drive and brake components, meaning more uptime and reduced maintenance costs. For you, that means better performance than traditional torque converter systems, even in the most demanding applications.

Built for your bottom line

Reduce fuel consumption

Save on fuel with engines designed to reduce fuel use and significantly reduce exhaust particulate matter with Komatsu proprietary technologies like Komatsu Diesel Oxidation Catalyst, variable flow turbocharger and more.

Make engine revving unnecessary

FH100-160 series forklifts feature a variable displacement pump with a closed-center load sensing system. This feature allows for controlled fluid flow within the hydraulic system while lifting with no engine revving for reduced fuel consumption.

Lower operating costs

Help increase operator control, minimize power transmission loss, moderate fuel use and reduce environmental impact with the electronically controlled hydrostatic transmission (HST) hydraulic pump and motor system.



Hydro-Static drive

This electronically - controlled drive works as the engine rotates the hydraulic pump and the hydraulic power is transmitted to the hydraulic motor. No clutch means no possibility of heat loss or slippage from the inching operation for minimal power transmission loss.

When you need to cycle through big load applications

- Freight/logistics
- Shipping/ports
- Manufacturing
- Steel
- Metal industries
- Oil/gas
- Concrete/brick
- Recycling/waste
- Wood/lumber
- General industrial

Works as hard and as smart as you do

Engineered to deliver

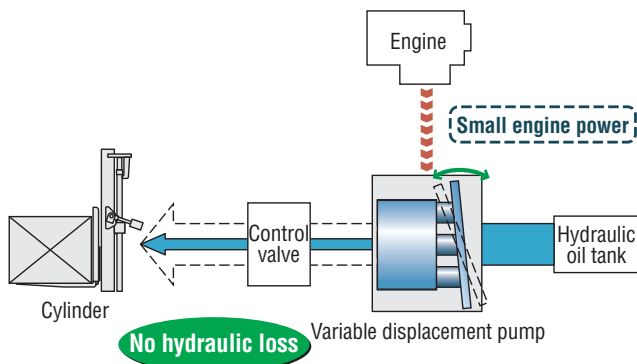
For durability you can count on, Komatsu Engineering Standards (KES) are design and manufacturing standards exceeding those required in the industry. Through KES, we strive to deliver unmatched quality across all our mining, construction and forklift machines.

More power when you need it

The closed-center load sensing system (CLSS) hydraulic system automatically senses the load and supplies only the amount of hydraulic fluid needed. It's much more efficient than conventional fixed displacement gear pumps that often deliver too much oil, leading to added engine stress and more fuel used.

Closed-center load sensing system

The pump supplies just the amount of oil needed to do specific work, and there is no loss of hydraulic oil. This system makes very efficient use of the engine power, resulting in reduced fuel consumption. With this system the operator also can lift the load with the engine running at slow speeds.



Machine status visibility

Track your machine and its productivity at a glance. The FH series forklift's standard high-resolution interactive LCD monitor provides constant feedback on machine status. Metrics include operation time, fuel consumption, maintenance tracking, speed limiting, safety systems, current load and more.



Minimizing your environmental impact

Ultra-clean diesel technology

Reduce your emissions and help promote a cleaner work environment. The FH100-160's EPA Tier Final 4 engine employs multiple catalytic and gas recirculation systems that decompose NO_x into water vapor and non-toxic gas.

Doesn't skimp on power

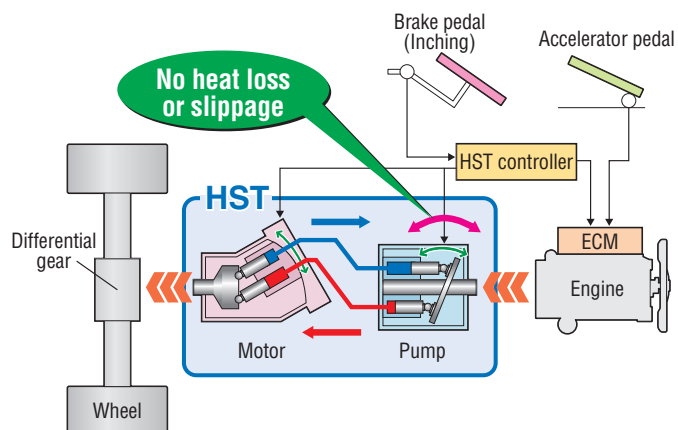
Newly designed to improve fuel economy without sacrificing performance, the variable flow turbocharger system helps deliver optimal airflow under all speed and load conditions.

Fewer exhaust particulates

Crankcase emissions are passed through a filter that traps oil mist and returns it to the crankcase for combustion, reducing particulate matter emission by 90%.

Smooth operation

The efficient, electronically controlled hydrostatic transmission (HST) does not have a clutch. That means your operators won't lose power during incremental moves, allowing for excellent control, economical fuel use and low environmental impact.



For exceptional performance, sustainability and dependability, the electronics and hydraulics of the FH100-160 are engineered to work together seamlessly.

Protect your operator, protect your machine

Multiple operator protection features

Limit operation if the operator is not positioned properly with the Operator Presence Sensing System. It requires the operator to be seated before allowing traveling or lifting. The truck will only start when the operator is seated, the machine is in neutral and the brake pedal is depressed.

Easy speed management

Set travel speed parameters to meet your needs. The FH series allows you to set speed limits in three stages to reduce speeds in tight spaces and to set speed limit rules to comply with in-plant limits.

Brakes suited for high cycles and harsh conditions

In addition to hydrostatic braking, the FH series has sealed wet multiple-disc brakes that protect from dust, dirt and debris. This design provides exceptional durability, fade and water resistance, and fast, constant and reliable braking in high-cycle operations.



Manage your fleet for success with Komtrax

Actionable insights

Track your machine and its productivity with key data, like daily usage, fuel consumption, operator productivity, location and movement, and more, with Komatsu's Komtrax wireless tracking and reporting system. Easy to use and web-based, it gives you secure usage data anywhere, anytime.

Information accumulated on the machine is transmitted via cell network and stored in a server. Gain actionable data insights for daily reports and monitor monthly and annual operational records to track how your machines are being used. Visualization tools track movements to help you make smarter decisions on forklift usage and efficiency.



Support you can count on

Exceptional protections

Coverage you can count on. Komatsu offers the longest and strongest warranty in the industry — up to 24 months and unlimited hours, 60mo/8k hours drivetrain.

Financing crafted with your firm in mind

Flexible financing options tailored to meet your needs. We partner with industry leaders in equipment finance to help meet your needs in an ever-changing business climate.

Less maintenance, more uptime

Longer scheduled maintenance intervals only required every 500 hours, which reduces downtime, saves money and lowers cost of ownership.

Forklift dealer network

Equipment, coverage and support you can rely on. With a dealer network with more than 195 dealer locations throughout the United States, Canada, Mexico, the Caribbean, and Central and South America, trained service personnel are available to assure excellent service support to help minimize your downtime. Get the most from your investment with genuine Komatsu parts and expertise of trained and factory-certified technicians.

Product designs, specifications and/or data in this document are provided for informational purposes only and are not warranties of any kind. Product designs and/or specifications may be changed at any time without notice. The only warranties that apply to sales of products and services are Komatsu's standard written warranties, which will be furnished upon request.

Komatsu and other trademarks and service marks used herein are the property of Komatsu Ltd., Komatsu America Corp., Komatsu Mining Corp., or one of their affiliates, or the respective owners or licensees.

KOMATSU

[komatsu.com](https://www.komatsu.com)

