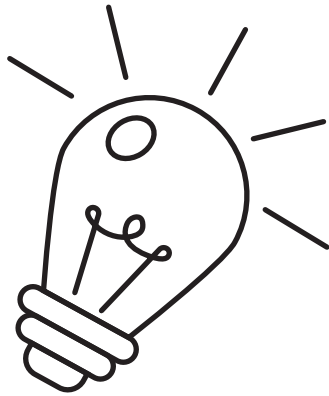
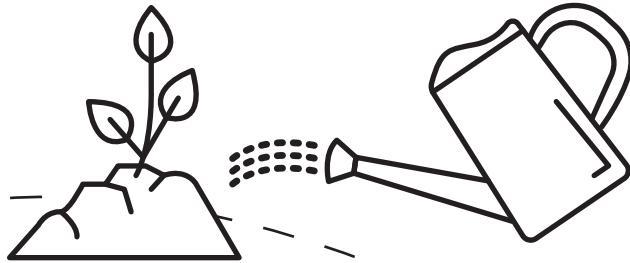


Seven principles of xeriscaping

- ① It all starts with **planning your water conservation project**. Create a design in phases so it doesn't seem overwhelming.

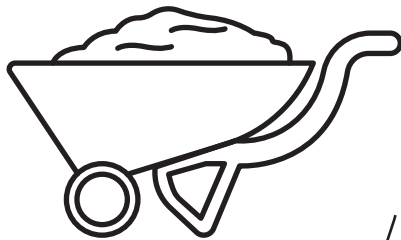


- ② Ensure your **turf areas** are practical in size, shape and grade. This will help you have confidence that you can manage your new landscape.



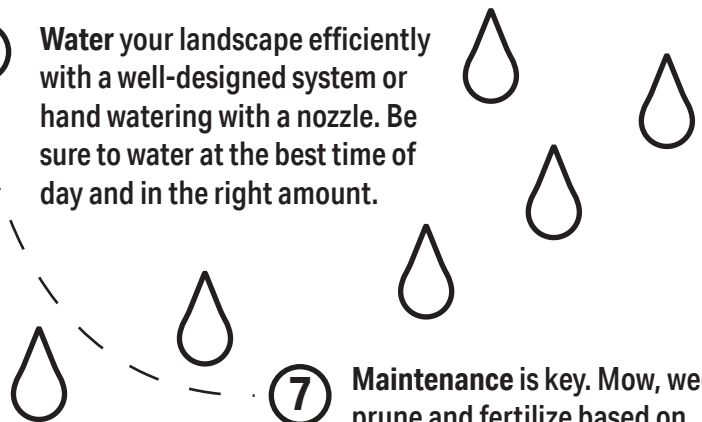
- ③ Identify the best **low-water plants** and group for your project based on water needs. It's a good idea to water these plants at home first to make sure it will work for your project.

- ④ When planting, use #1 or #2 **compost for soil amendments**. These have fewer salts that may damage plants in higher amounts.



- ⑥ **Water your landscape efficiently** with a well-designed system or hand watering with a nozzle. Be sure to water at the best time of day and in the right amount.

- ⑤ Reduce evaporation with **organic mulch or inorganic river rock**. Do your research and find out what your plants prefer.



- ⑦ **Maintenance is key**. Mow, weed, prune and fertilize based on plant needs. Many low-water plants native to your area don't need fertilization.

